

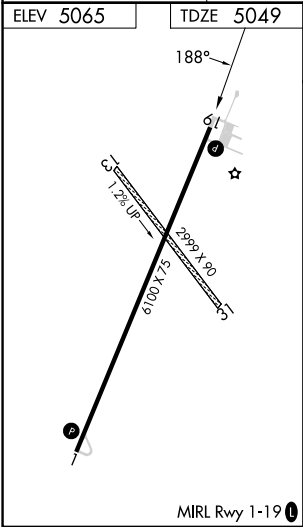
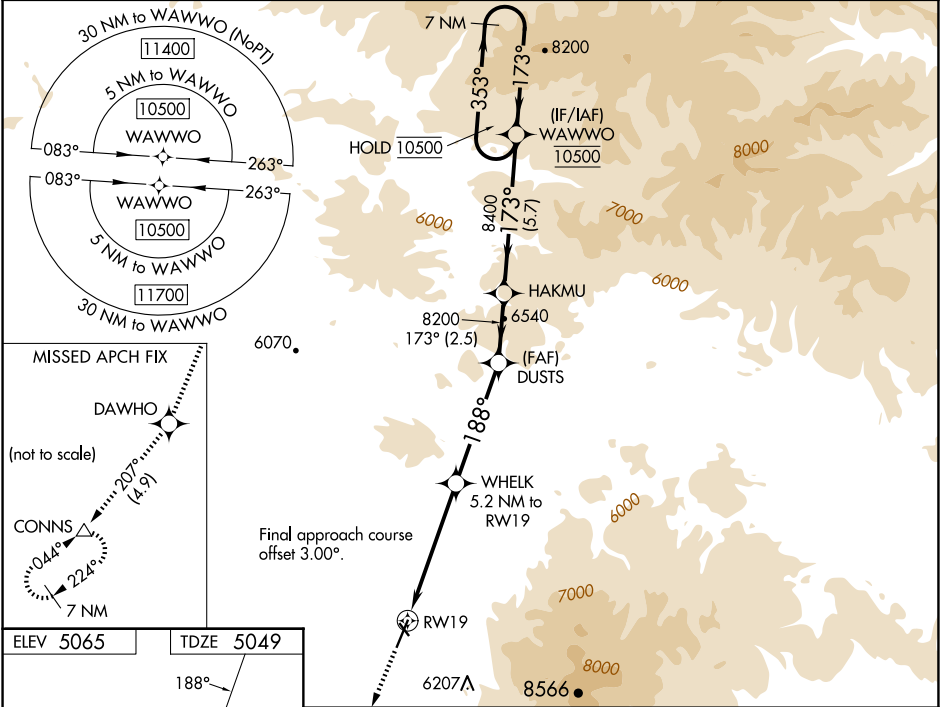
WAAS CH <b>65648</b> <b>W19A</b>	APP CRS <b>188°</b>	Rwy Idg <b>6100</b> TDZE <b>5049</b> Apt Elev <b>5065</b>
--	------------------------	---

RNAV (GPS) RWY 19

WHITE SULPHUR SPRINGS (7S6)

RNP APCH - GPS.	MISSED APPROACH: Climb to 5700 then climb to 10000 direct DAWHO and on track 207° to CONNS and hold, continue climb-in-hold to 10000.
For uncompensated Baro-VNAV systems, LNAV/VNAV NA below -25°C or above 54°C. Rwy 19 helicopter visibility reduction below ¾ SM NA. Circling NA to Rwys 13 and 31. Circling NA for Cats C and D east of Rwy 1-19. Circling NA for all Cats east of Rwy 1-19 at night.	

AWOS-3PT <b>118.525</b>	SALT LAKE CENTER <b>133.4 285.4</b>	CTAF <b>122.9</b>
----------------------------	--	----------------------



ELEV 5065	TDZE 5049	5700	10000	DAWHO	tr 207°	CONNS	WAWWO
		↑	↑	✧	△		7 NM Holding Pattern
				WHEEL 5.2 NM to RW19	DUSTS 8200	HAKMU 8400	
				2.5 NM to RW19	188°	173°	353°
				6740	8200	8400	10500
		2.5 NM	2.7 NM	4.6 NM	2.5 NM	5.7 NM	GP 3.00° TCH 35
CATEGORY	A	B	C	D			
LPV DA	5415-1		366 (400-1)				
LNAV/VNAV DA	5495-1 ¾		446 (500-1 ¾)				
LNAV MDA	5880-1 831 (900-1)	5880-1 ¼ 831 (900-1 ¼)	5880-2 ½	831 (900-2 ½)			
CIRCLING	5880-1 ¼ 815 (900-1 ¼)	5920-1 ¼ 855 (900-1 ¼)	5920-2 ½ 855 (900-2 ½)	5920-2 ¾ 855 (900-2 ¾)			