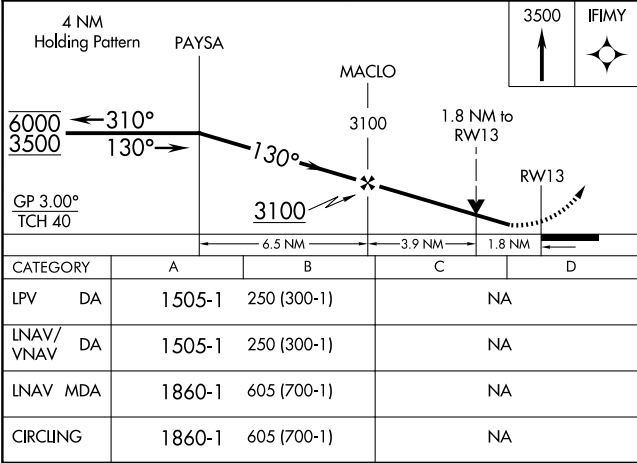
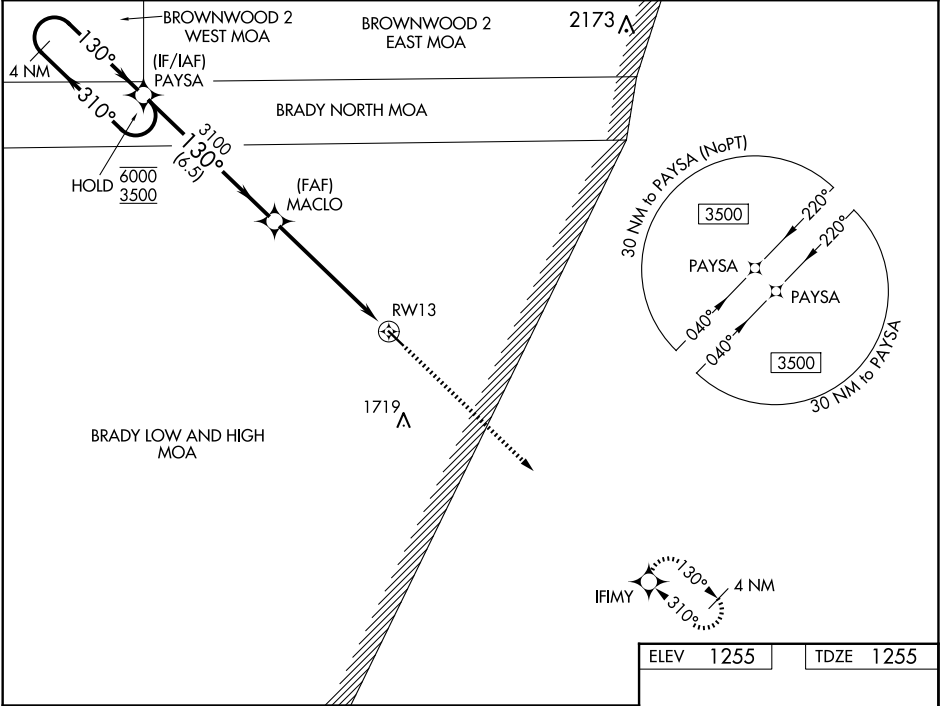


WAAS CH <b>87144</b> <b>W13A</b>	APP CRS <b>130°</b>	Rwy Idg TDZE <b>1255</b> Apt Elev <b>1255</b>	<b>4206</b>
--	------------------------	---	-------------

**RNAV (GPS) RWY 13**  
SAN SABA COUNTY MUNI (81R)

RNP APCH - GPS. ▼ Rwy 13 helicopter visibility reduction below ¾ SM NA. For uncompensated Baro-VNAV systems, LNAV/VNAV NA below -17°C or above 54°C.	MISSED APPROACH: Climb to 3500 direct IFIMY and hold.
---	---

AWOS-3P <b>120.525</b>	HOUSTON CENTER <b>132.35 317.5</b>	UNICOM <b>122.8 (CTAF) 0</b>
---------------------------	---------------------------------------	---------------------------------



ELEV	1255	TDZE	1255
------	------	------	------

CATEGORY	A	B	C	D
LPV DA	1505-1	250 (300-1)	NA	
LNAV/VNAV DA	1505-1	250 (300-1)	NA	
LNAV MDA	1860-1	605 (700-1)	NA	
CIRCLING	1860-1	605 (700-1)	NA	

MIRL Rwy 13-31 0

SC-3, 10 JUL 2025 to 07 AUG 2025

SC-3, 10 JUL 2025 to 07 AUG 2025