

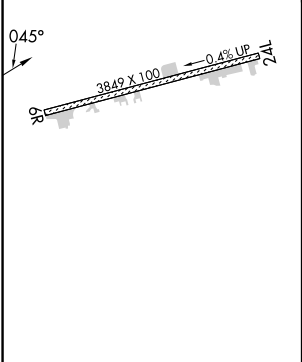
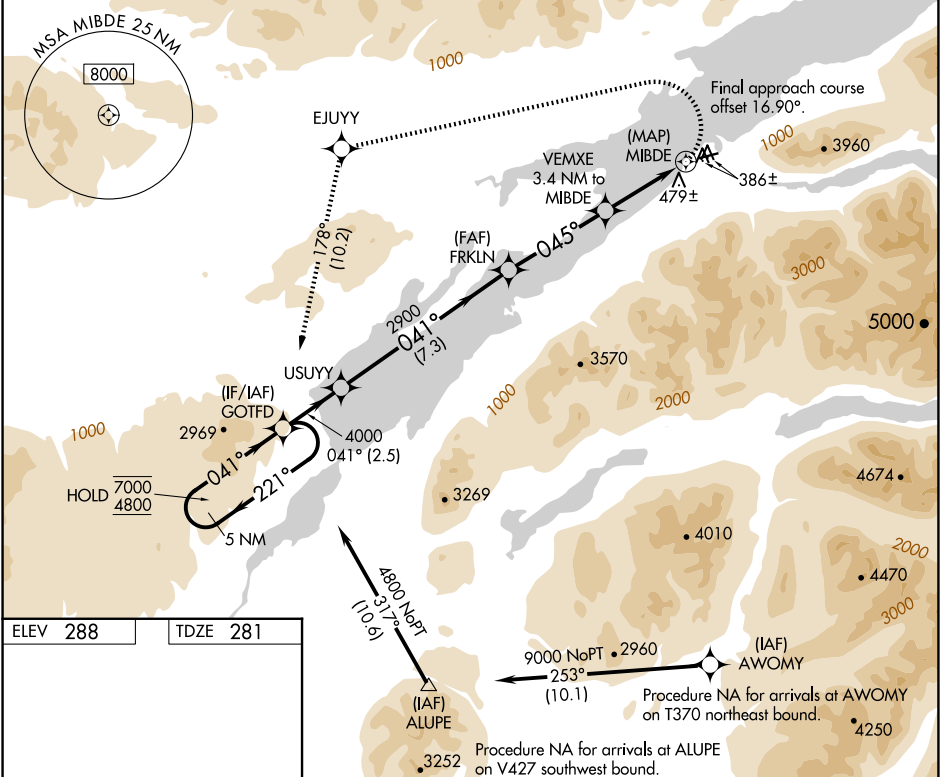
APP CRS	Rwy Idg	3849
045°	TDZE	281
	Apt Elev	288

RNAV (GPS) RWY 6R

WILDER RUNWAY (Ø5K)(PAKX)

RNP APCH - GPS.	MISSED APPROACH: Climbing left turn to 4800 direct EJUY and on track 178° to GOTFD and hold, continue climb-in-hold to 4800.
<div><div><div>▼</div><div>⚠</div><div>⚠</div></div><div>Procedure NA at night. Rwy 6R helicopter visibility reduction below 1 SM NA. Circling NA south of Rwy 6R-24L.</div></div>	

AWOS-3P 118.025	ANCHORAGE CENTER 118.8 351.8	CTAF 122.9
--------------------	---------------------------------	---------------



5 NM Holding Pattern		GOTFD		Visual Segment - Obstacles.		4800	EJUY	tr 178°	GOTFD
7000 ← 221°		USUY	FRKLN	VEMXE	3.4 NM to MIBDE		MIBDE		
4800 → 041°		4000	2900	1580					
		2.5 NM	7.3 NM	4.1 NM	3.4 NM	0.5 NM			
CATEGORY	A	B	C	D					
LNAV MDA	860-1	579 (600-1)	NA						
CIRCLING	1280-1¼ 992 (1000-1¼)	1980-1½ 1692 (1700-1½)	NA						

AK, 12 JUN 2025 to 07 AUG 2025

AK, 12 JUN 2025 to 07 AUG 2025