

NORFOLK, VIRGINIA

COPTER RNAV (GPS) 141°

23334

APCH CRS <b>141°</b>	Rwy ldg TDZE Arpt Elev <b>N/A</b> <b>10</b>
-------------------------	---

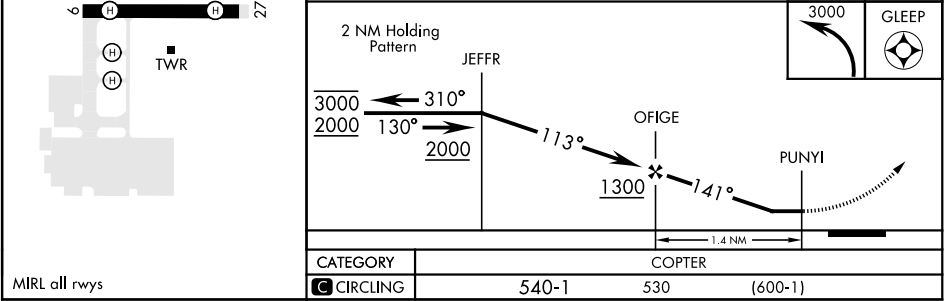
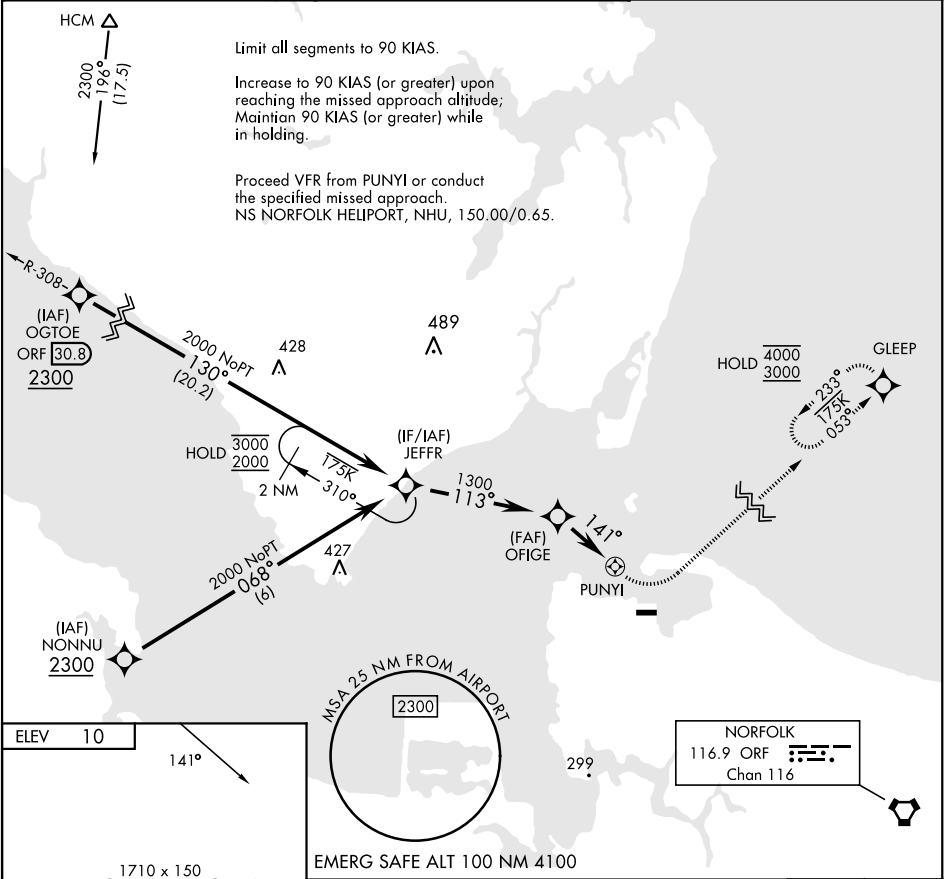
[USN]

NORFOLK NS HELIPORT (KNHU)

RNP APCH
◀ Circling visibility reduction by helicopters NA.

MISSED APPROACH: Climbing left turn to 3000 direct GLEEP and hold.

CHAMBERS TOWER <b>124.3 379.15</b>	NAVY NORFOLK HEL TOWER <b>126.375 290.5</b>	GND CON <b>298.95</b>
---------------------------------------	--	--------------------------



NORFOLK, VIRGINIA

36°57'N - 76°18'W

NORFOLK NS HELIPORT (KNHU)

Amtd 1 30NOV23

COPTER RNAV (GPS) 141°

NE-3, 10 JUL 2025 to 07 AUG 2025

NE-3, 10 JUL 2025 to 07 AUG 2025