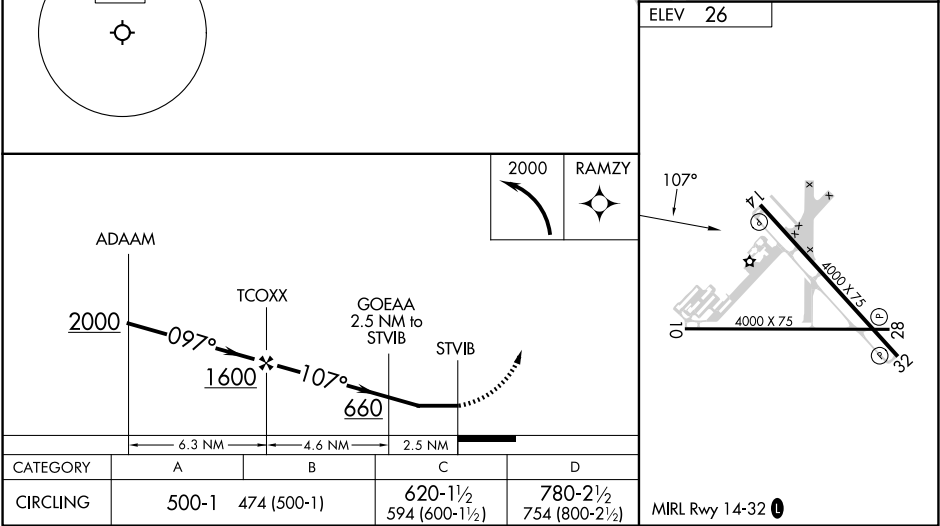
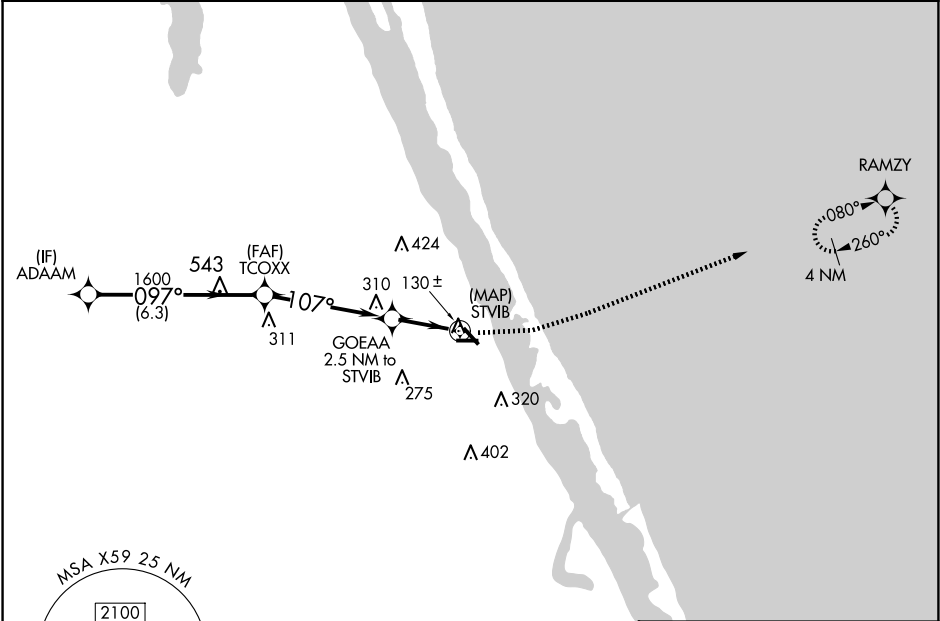


APP CRS	Rwy Idg	NA
107°	TDZE	NA
	Apt Elev	26

RNAV (GPS)-B
VALKARIA (X59)

RNP APCH - GPS.	MISSED APPROACH: Climbing left turn to 2000 direct RAMZY and hold.
Circling Rwy 10, 14, 28 NA at night. Rwy 10, 14, and 28 helicopter visibility reduction below 1 SM NA. When local altimeter setting not received, use MSL altimeter setting and increase all MDAs 40 feet and visibility Cat C ¼ SM.	

AWOS-3PT 119.525	ORLANDO APP CON 132.65 281.425	AUNICOM 122.725 (CTAF) 0
---------------------	-----------------------------------	-----------------------------



SE-3, 10 JUL 2025 to 07 AUG 2025

SE-3, 10 JUL 2025 to 07 AUG 2025