

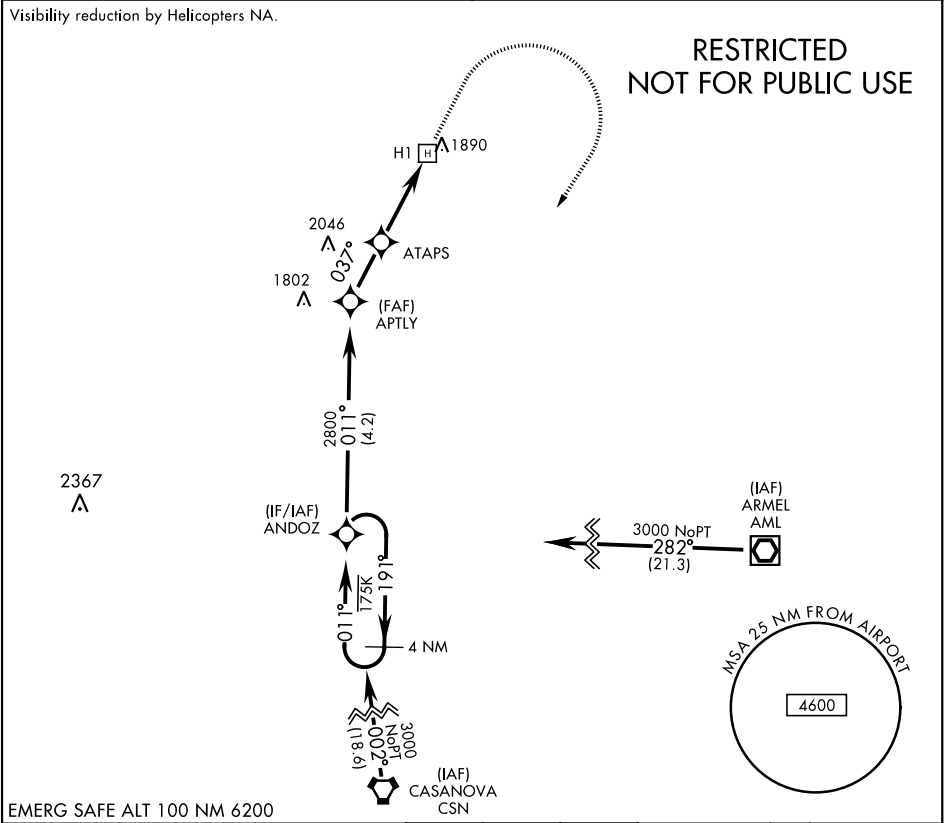
APCH CRS	Rwy Idg
037°	50
TDZE	1707
Arpt Elev	1707

AL-11678 [USN]

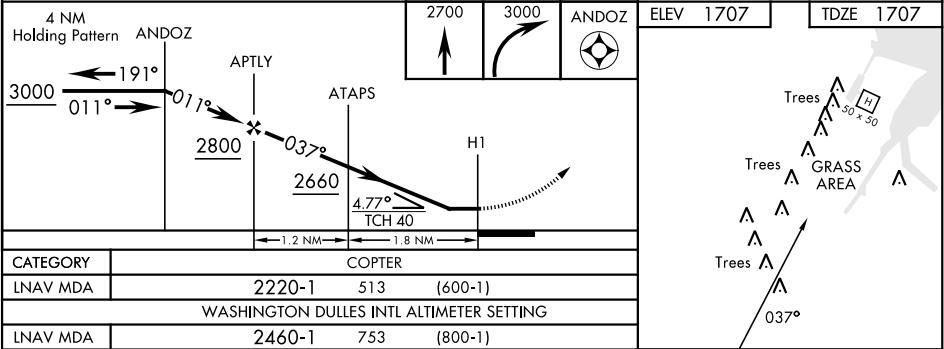
BLUEGRASS (9VA5)

RNP APCH	MISSED APPROACH: Climb to 2700 then climbing right turn to 3000 direct ANDOZ and hold.
▼ Obtain local altimeter on Bluegrass Advsy, when not rcvd use DULLES Intl altimeter. FEMA SPECIAL FACILITY (Bluegrass) normal opr 0745-1630L Mon-Fri. Phone 504-542-3014 for PPR.	

POTOMAC APP CON 120.45 306.925	BLUEGRASS ADVISORY ★ 126.2 241.0
-----------------------------------	-------------------------------------



EMERG SAFE ALT 100 NM 6200



NE-3, 10 JUL 2025 to 07 AUG 2025

NE-3, 10 JUL 2025 to 07 AUG 2025