

APP CRS  
**185°**

Rwy Idg  
TDZE  
Apt Elev

**4001**  
**671**  
**671**

**RNAV (GPS) RWY 18**  
DELPHI MUNI (I19)

RNP APCH - GPS.

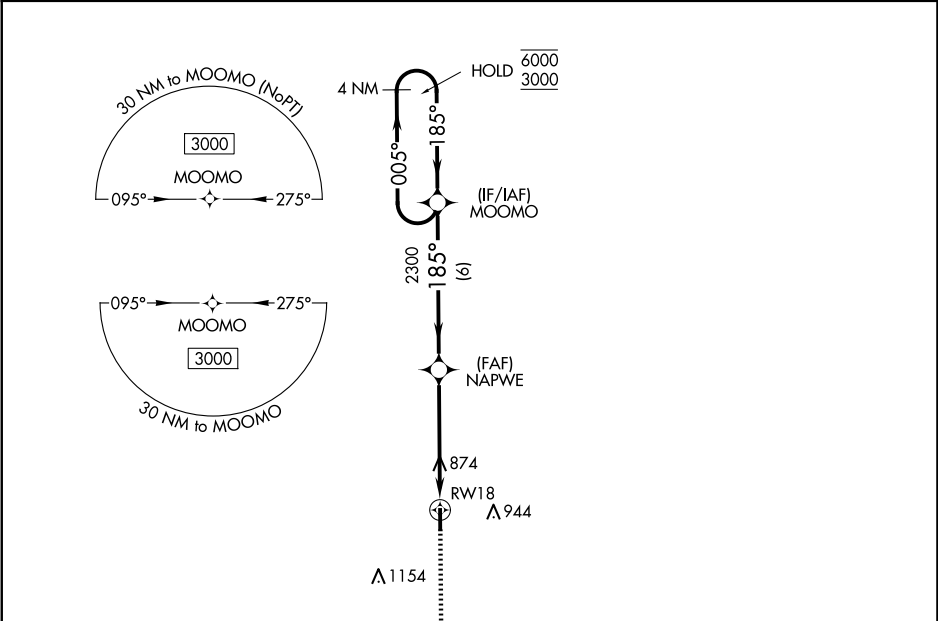
▼

NA

Rwy 18 helicopter visibility reduction below 1 SM NA.  
Use Monticello altimeter setting. Procedure NA at night.

MISSED APPROACH: Climb to 3000 direct OCUPA and hold.

MCX AWOS-3P <b>124.05</b>	GRISSEM APP CON★ <b>121.05 338.275</b>	CTAF <b>122.9</b>
------------------------------	---	----------------------



ELEV 671

TDZE 671

MIRL Rwy 18-36

REIL Rwys 18 and 36

MISSED APCH FIX  
OCUPA

3000 OCUPA

VGSI and descent angles not coincident (VGSI Angle 3.00/TCH 26).

4 NM Holding Pattern

NAPWE

RW18

MOOMO

2300

185°

005°

6000

3000

5 NM

6 NM

CATEGORY	A	B	C	D
LNAV MDA	1160-1	489 (500-1)	NA	
CIRCLING	1160-1 489 (500-1)	1220-1 549 (600-1)	NA	