

WAAS  
CH **42644**  
**W35A**

APP CRS  
**355°**

Rwy Idg  
TDZE **2631**  
Apt Elev **2637**

RNAV (GPS) RWY 35  
GOVE COUNTY (1QK)

RNP APCH-GPS.

▼

NA

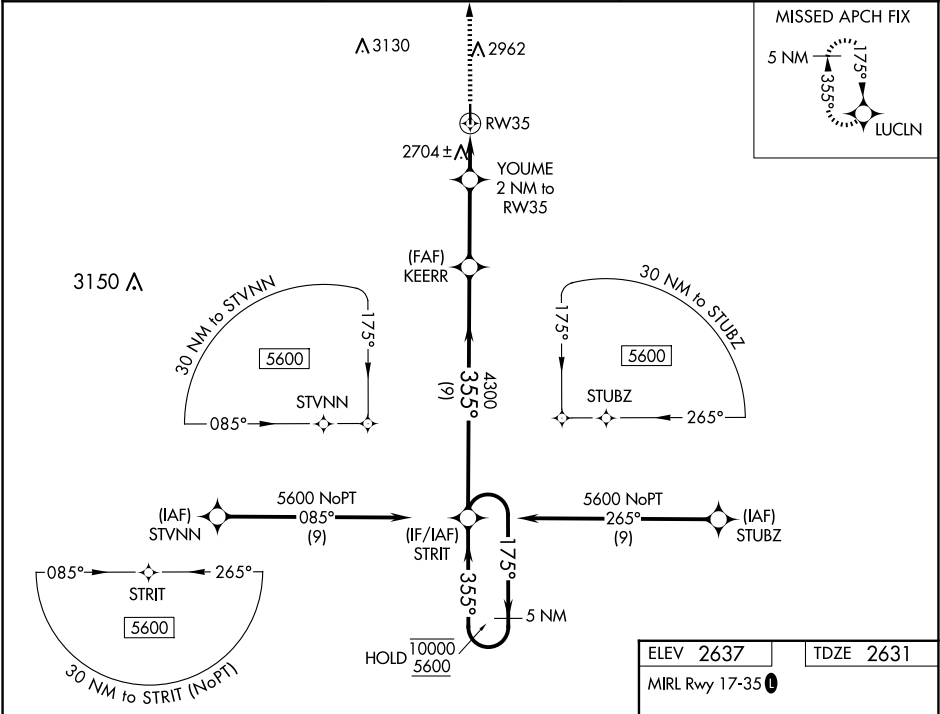
Rwy 35 helicopter visibility reduction below ¾ SM NA.  
Baro-VNAV NA. Use Hill City altimeter setting.

MISSED APPROACH: Climb to 5600 direct LUCLN and hold.

HLC ASOS  
**118.425**

DENVER CENTER  
**132.7 226.675**

CTAF  
**122.90**



5 NM Holding Pattern

10000

5600

175°

355°

GP 3.00°

TCH 40

STRIT

KEERR

4300

YOU ME  
2 NM to  
RW35

3300

3.1 NM

2 NM

5600

LUCLN

RW35

ELEV 2637

TDZE 2631

MIRL Rwy 17-35

4000 X 50

0.6% UP

35

355° to RW35

CATEGORY	A	B	C	D
LPV DA	3001-1	370 (400-1)		NA
LNAV/VNAV DA	3001-1	370 (400-1)		NA
LNAV MDA	3080-1	449 (500-1)		NA
CIRCLING	3340-1 703 (800-1)	3400-1 763 (800-1)		NA