

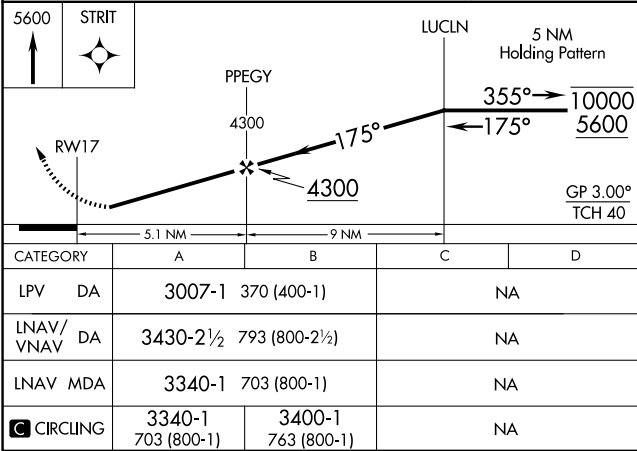
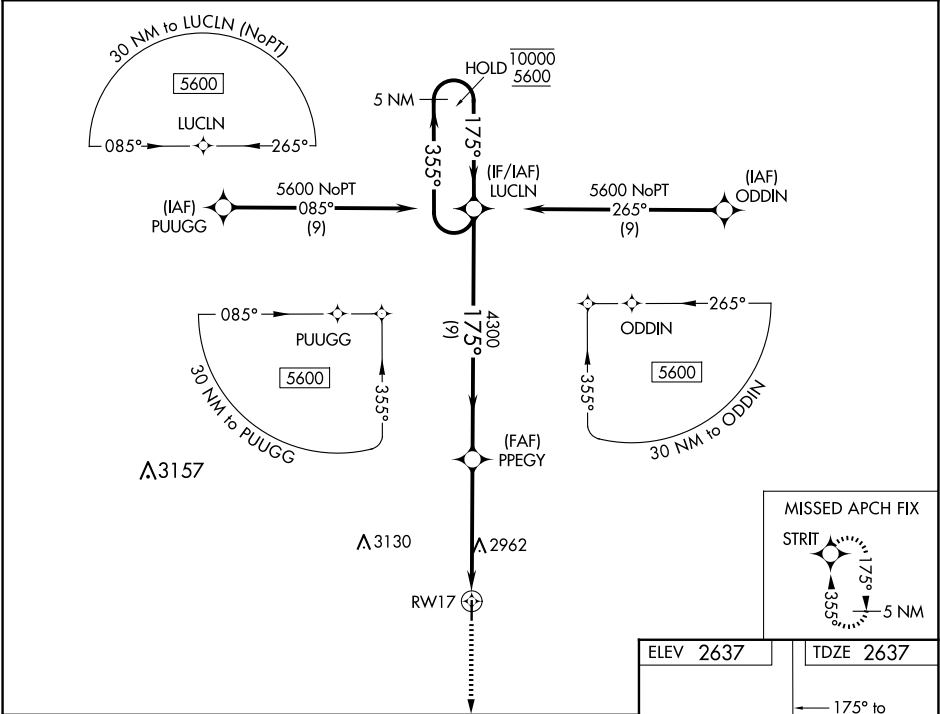
WAAS CH 81944 W17A	APP CRS 175°	Rwy Idg 4000 TDZE 2637 Apt Elev 2637
--	------------------------	---

RNAV (GPS) RWY 17

GOVE COUNTY (1QK)

RNP APCH-GPS.	MISSED APPROACH: Climb to 5600 direct STRIT and hold.
<div><div><div></div></div><div>Rwy 17 helicopter visibility reduction below ¾ SM NA. Baro-VNAV NA. Use Hill City altimeter setting.</div></div>	

HLC ASOS 118.425	DENVER CENTER 132.7 226.675	CTAF 122.90
----------------------------	---------------------------------------	-----------------------



ELEV 2637	TDZE 2637
175° to RWY 17	
4000 x 60	
0.6% UP	
35	
MIRL Rwy 17-35	