



## COPTER RNAV (GPS) 185

AL-11589 (USA)

WEIDE AHP (ABERDEEN PROVING GROUND) (KEDG)

APCH CRS 185°	Rwy Idg TDZE Arpt Elev	1704 N/A 21
------------------	------------------------------	-------------------

RNP APCH - GPS	MISSED APPROACH: Climbing left turn to 2500 direct JIRET and hold.
 NA	
AWOS-AV <b>126.2</b> (CTAF) 	POTOMAC APP CON/DEP CON <b>125.525 291.625</b>

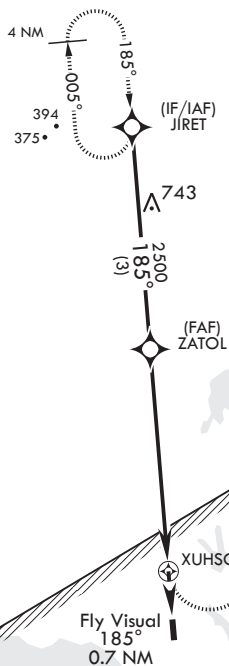
571

Proceed VFR from XUHSO  
or conduct the specified  
missed approach.

For VFR missed approach  
exit restricted area to  
north expeditiously.

Limit all segments to 80 KIAs.

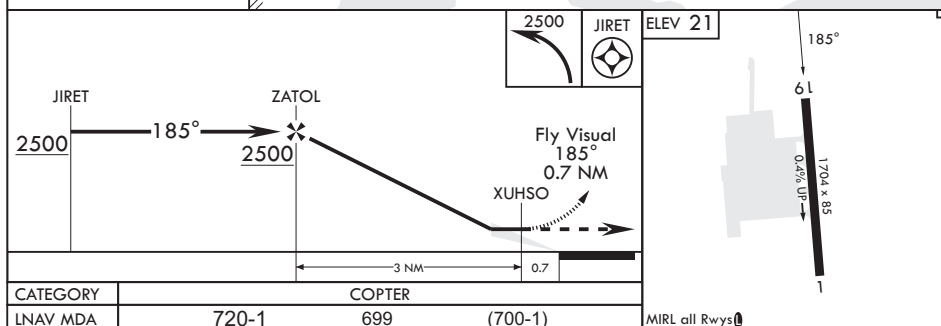
Use Phillips AAF altimeter setting.



R4001A(B)

MSA XUHSO 25 NM

2600



EDGEWOOD, MARYLAND

39°24'N - 76°17'W

WEIDE AHP (ABERDEEN PROVING GROUND) (KEDG)

Amdt 1 23FEB23  
TERPS

## COPTER RNAV (GPS) 185