

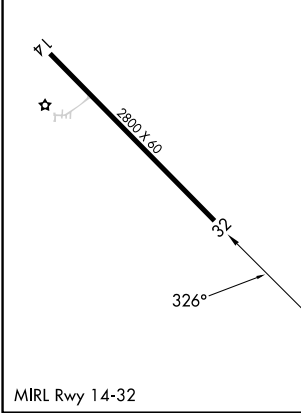
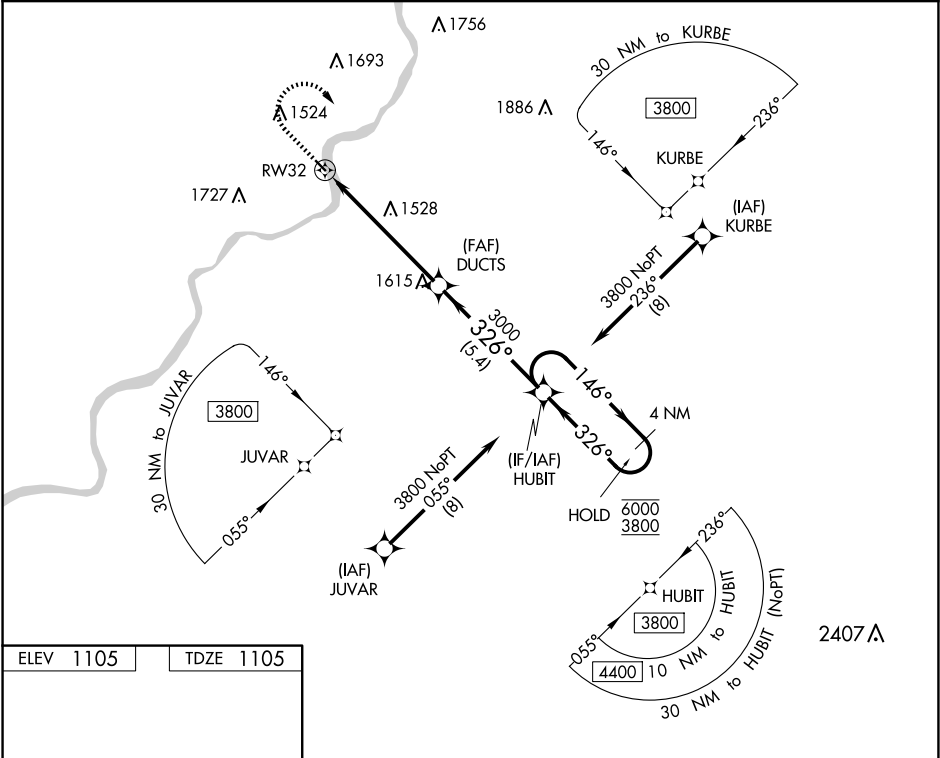
WAAS CH 50143 W32A	APP CRS 326°	Rwy Idg TDZE Apt Elev	2800 1105 1105
--	------------------------	-----------------------------	---

RNAV (GPS) RWY 32

MCVILLE (6P7)

RNP APCH.	MISSED APPROACH: Climb to 2200 then climbing right turn to 4000 direct HUBIT and hold.
Procedure NA at night. Rwy 32 helicopter visibility reduction below 1 SM NA. Use Pittsburgh/Butler Rgnl altimeter setting.	

BTP AWOS-3PT 121.45	JOHNSTOWN APP CON ★ 121.2	UNICOM 123.0 (CTAF)
-------------------------------	-------------------------------------	-------------------------------



2200	4000	HUBIT	Visual Segment - Obstacles.		4 NM Holding Pattern
↑	↪	★	DUCTS		HUBIT
RW32		3000	146° → 6000		← 326° 3800
5.8 NM		5.4 NM			
CATEGORY	A	B	C	D	
LP MDA	1840-1	735 (800-1)	NA		
LNAV MDA	1840-1	735 (800-1)	NA		
✶ CIRCLING	1860-1	1880-1	NA		
	755 (800-1)	775 (800-1)			

NE-4, 10 JUL 2025 to 07 AUG 2025

NE-4, 10 JUL 2025 to 07 AUG 2025