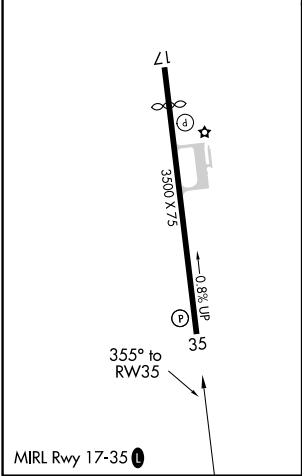
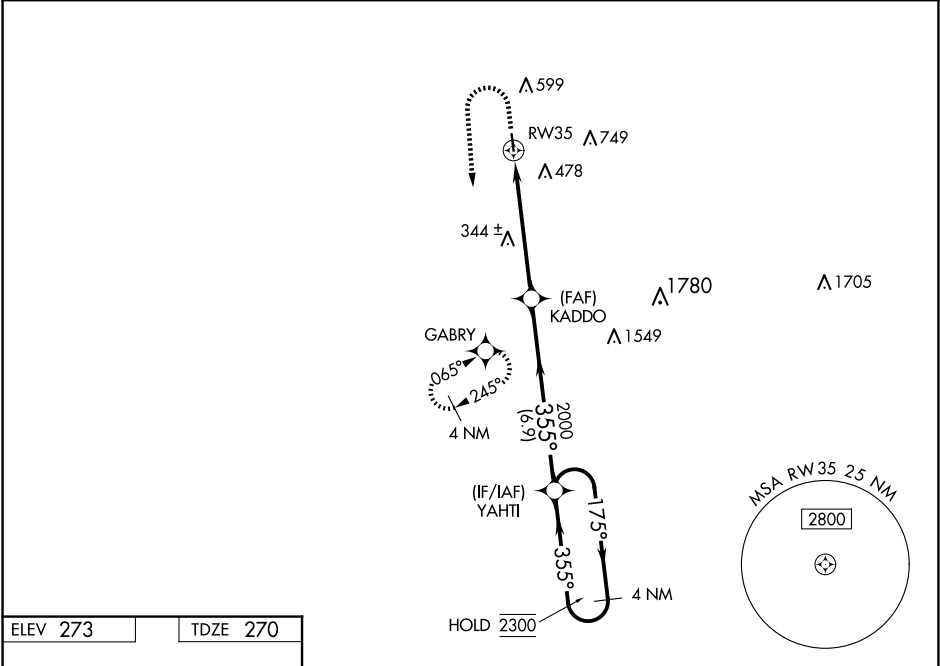


WAAS CH <b>86643</b> <b>W35A</b>	APP CRS <b>355°</b>	Rwy Idg TDZE Apt Elev	<b>3500</b> <b>270</b> <b>273</b>
--	------------------------	-----------------------------	---

RNAV (GPS) RWY 35

DEAN GRIFFIN MEML (M24)

RNP APCH - GPS.		MISSED APPROACH: Climb to 800 then climbing left turn to 3000 direct GABRY and hold, continue climb-in-hold to 3000.
<div><div></div><div>Rwy 35 helicopter visibility reduction below ¾ SM NA. Baro-VNAV NA.</div><div></div><div>NA Use Hattiesburg Bobby L Chain Muni altimeter setting.</div></div>		
HBG ASOS <b>135.425</b>	GULFPORT APP CON ★ <b>127.5 254.25</b>	UNICOM <b>122.8 (CTAF) 0</b>



800		3000	GABRY	4 NM Holding Pattern	
KADDO		2000	355°	175°	2300
RW35		2000	355°	355°	GP 3.00° TCH 50
5.4 NM		6.9 NM			
CATEGORY	A	B	C	D	
LPV DA	597-1	327 (400-1)	NA		
LNAV/VNAV DA	597-1	327 (400-1)	NA		
LNAV MDA	680-1	410 (500-1)	NA		
CIRCLING	760-1 487 (500-1)	1040-1 767 (800-1)	NA		

SC-4, 10 JUL 2025 to 07 AUG 2025

SC-4, 10 JUL 2025 to 07 AUG 2025