

NC-1, 10 JUL 2025 to 07 AUG 2025

GLEN ULLIN, NORTH DAKOTA

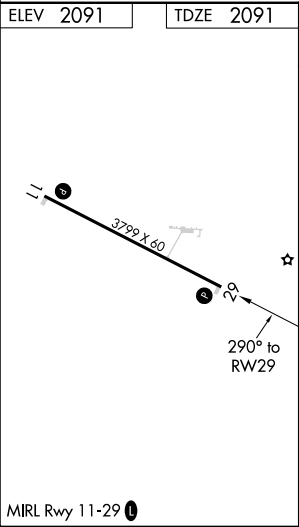
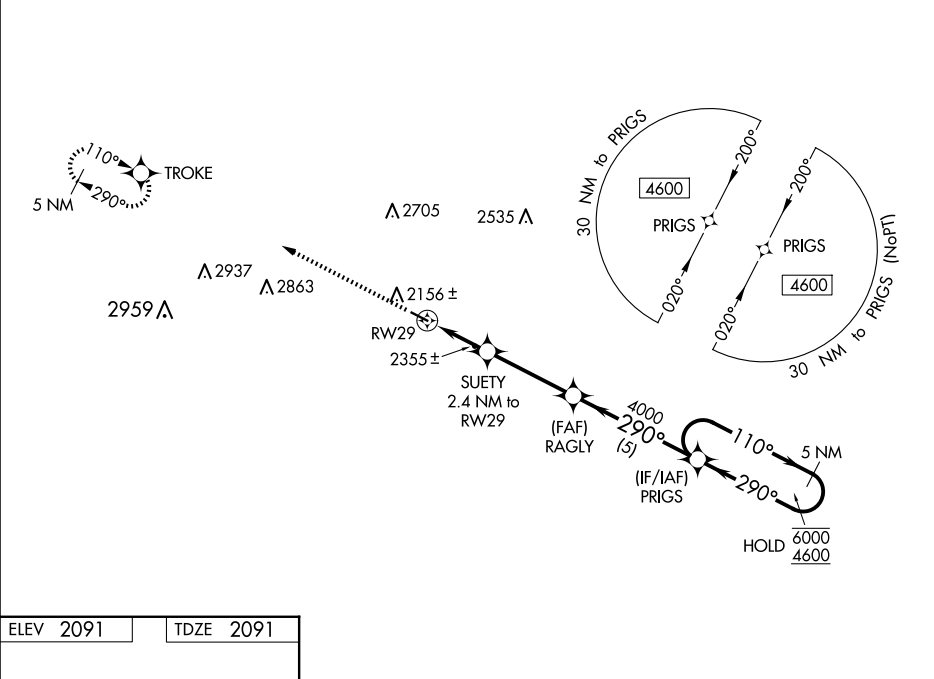
AL-11438 (FAA)

18312

WAAS CH 45642 W29A	APP CRS 290°	Rwy ldg 3799 TDZE 2091 Apt Elev 2091
----------------------------------------	------------------------	-----------------------------------------------------------------

RNAV (GPS) RWY 29
GLEN ULLIN RGNL (D57)

RNP APCH.		MISSED APPROACH: Climb to 4600 direct TROKE and hold.
▼ Rwy 29 helicopter visibility reduction below ¾ SM NA. For uncompensated Baro-VNAV systems, LNAV/VNAV NA below -19°C or above 54°C.		
AWOS-3P 118.75	MINNEAPOLIS CENTER 124.25 236.825	CTAF 122.9 0



4600 TROKE		VGSI and RNAV glidepath not coincident (VGSI Angle 3.00/TCH 26).		PRIGS 5 NM Holding Pattern	
*LNAV only.		SUETY 2.4 NM to RW29		RAGLY 4000	
RW29		*1.6 NM to RW29		2900*	
1.6 NM		0.8 NM		3.5 NM	
5 NM		5 NM		5 NM	
CATEGORY	A	B	C	D	
LPV DA	2341-1	250 (300-1)		NA	
LNAV/VNAV DA	2561-1 3/8	470 (500-1 3/8)		NA	
LNAV MDA	2620-1	529 (600-1)	2620-1 1/2 529 (600-1 1/2)	NA	
CIRCLING	2640-1 549 (600-1)	2680-1 589 (600-1)	2800-2 709 (800-2)	NA	

GLEN ULLIN, NORTH DAKOTA
Orig 08NOV18

46°49'N-101°52'W

GLEN ULLIN RGNL (D57)
RNAV (GPS) RWY 29

NC-1, 10 JUL 2025 to 07 AUG 2025