

WAAS CH <b>53542</b> <b>W36A</b>	APP CRS <b>356°</b>	Rwy Idg <b>4007</b> TDZE <b>430</b> Apt Elev <b>435</b>
--	------------------------	---

RNAV (GPS) RWY 36

COPIAH COUNTY (M11)

RNP APCH - GPS.

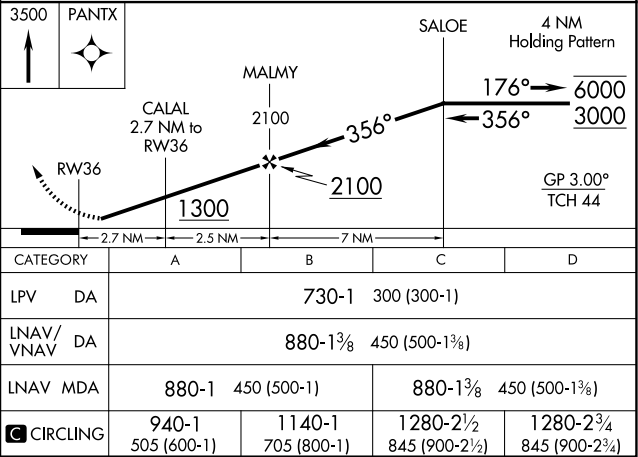
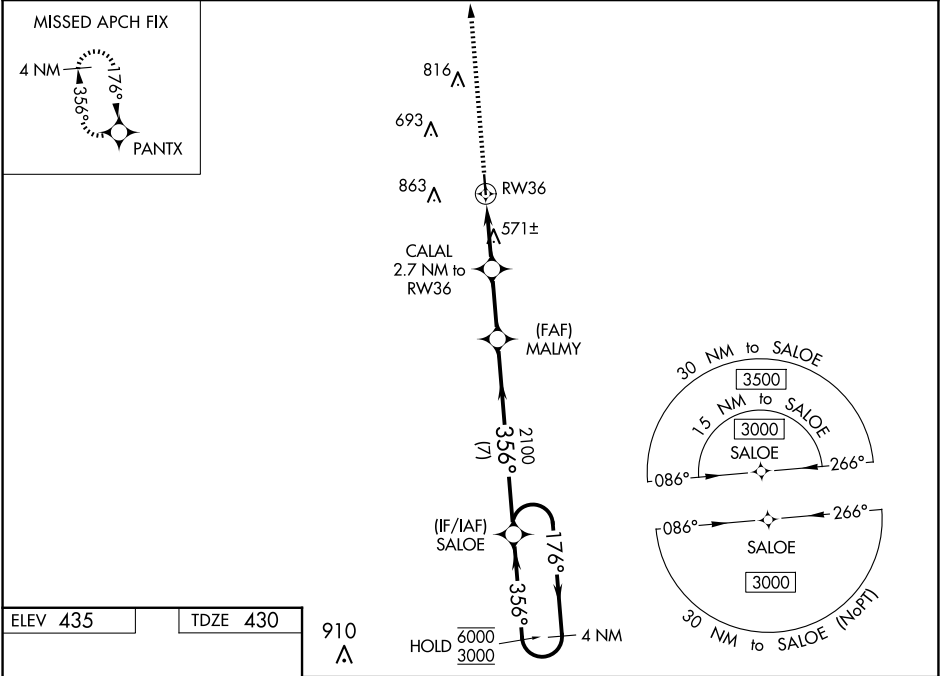
▼

NA

Circling Rwy 18 NA at night. Rwy 36 helicopter visibility reduction below ¾ SM NA. Baro-VNAV NA. Use Brookhaven altimeter setting; when not received, use Hawkins Fld altimeter setting and increase LPV DA to 756; increase LNAV/VNAV DA to 906; increase all MDAs 40 feet and Circling visibility Cats C and D ¼ SM.

MISSED APPROACH: Climb to 3500 direct PANTX and hold, continue climb-in-hold to 3500.

1R7 AWOS-3P <b>118.125</b>	MEMPHIS CENTER <b>132.5 259.1</b>	CTAF <b>122.9</b>
-------------------------------	--------------------------------------	----------------------



SC-4, 10 JUL 2025 to 07 AUG 2025

SC-4, 10 JUL 2025 to 07 AUG 2025