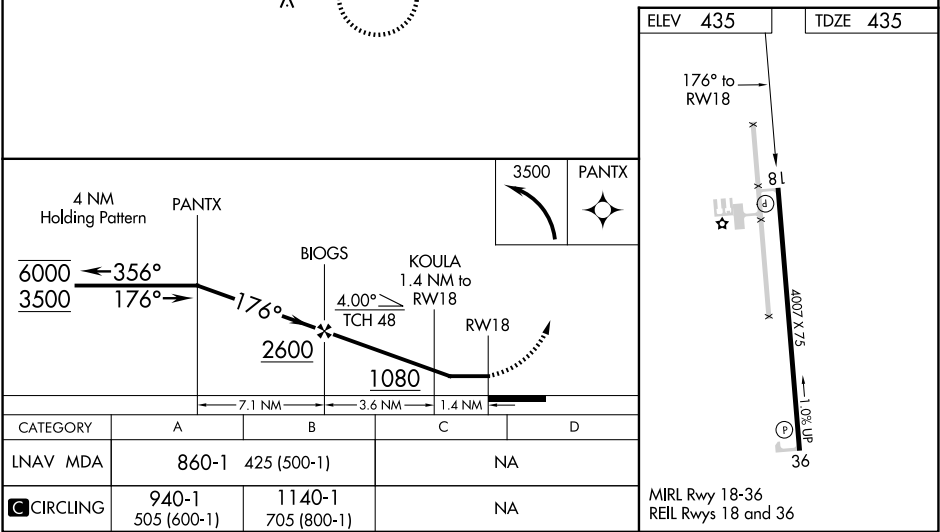
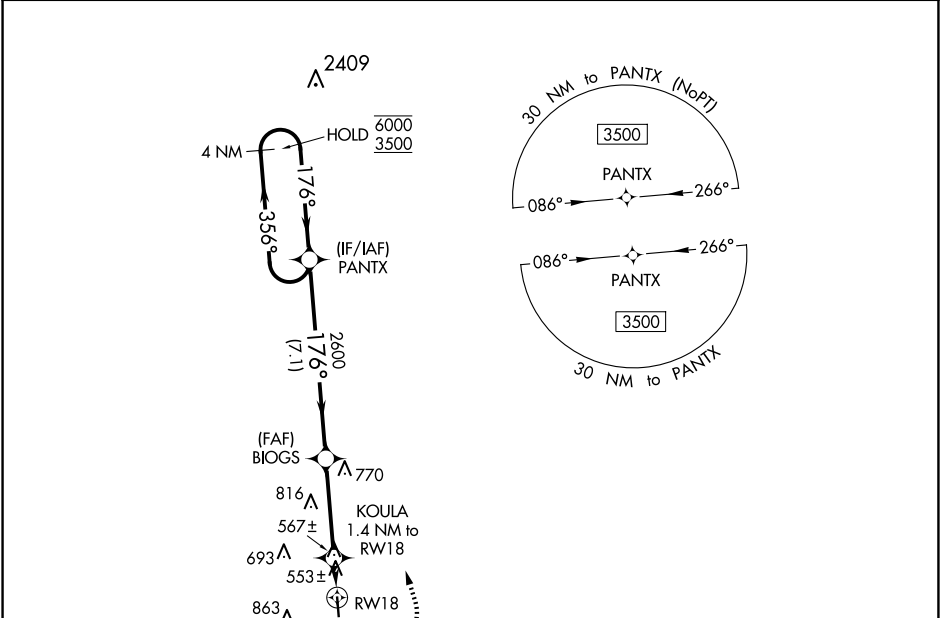


APP CRS	Rwy Idg	4007
176°	TDZE	435
	Apt Elev	435

RNAV (GPS) RWY 18
COPIAH COUNTY (M11)

RNP APCH.		MISSED APPROACH: Climbing left turn to 3500 direct PANTX and hold, continue climb-in-hold to 3500.
1R7 AWOS-3P 118.125	MEMPHIS CENTER 132.5 259.1	CTAF 122.9



SC-4, 10 JUL 2025 to 07 AUG 2025

SC-4, 10 JUL 2025 to 07 AUG 2025