

WAAS
CH 42842
W34A

APP CRS
338°

Rwy Idg
TDZE 919
Apt Elev 924

RNAV (GPS) RWY 34
FARINGTON FLD (K01)

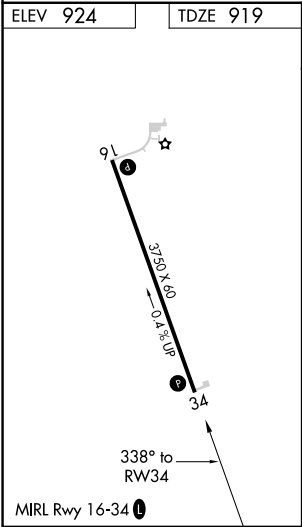
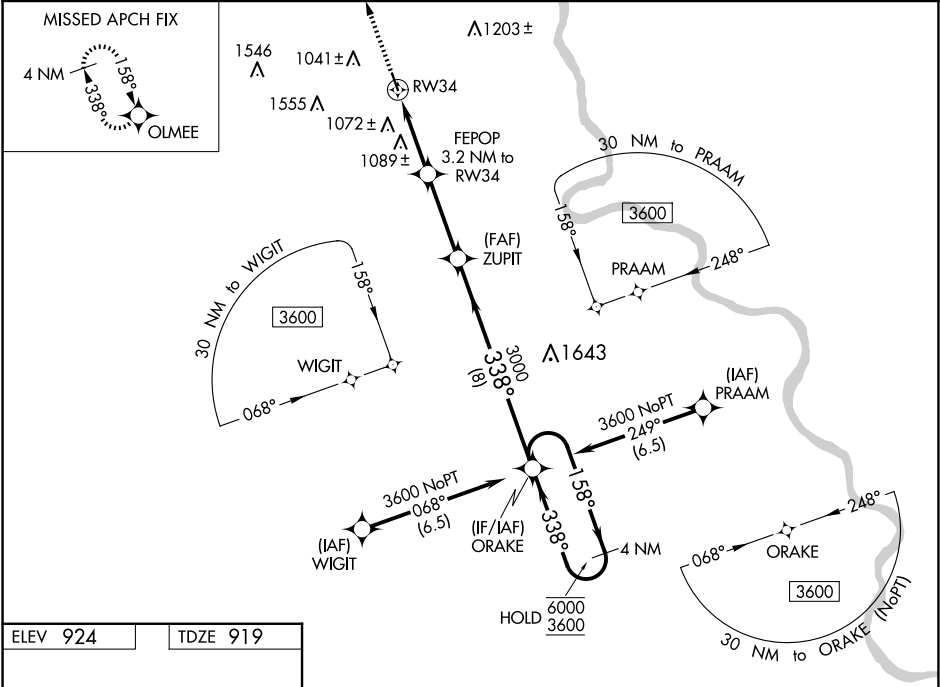
RNP APCH.
NA
Circling NA for Cat C west of Rwy 16-34.
Baro-VNAV NA.
Use Brenner Fld altimeter setting.

MISSED APPROACH: Climb to 3600 direct OLMEE and hold.

FNB ASOS
119.275

MINNEAPOLIS CENTER
128.75 346.3

CTAF
122.9



3600 OLMEE		ORAKE 4 NM Holding Pattern	
*LNAV only		ZUPIT 3000	
FEPOP 3.2 NM to RW34		1960*	
RW34		3000	
3.2 NM		8 NM	
CATEGORY	A	B	C
LPV DA	1175-1	256 (300-1)	NA
LNAV/VNAV DA	1302-1 1/8	383 (400-1 1/8)	NA
LNAV MDA	1400-1	481 (500-1)	1400-1 3/8 481 (500-1 3/8)
CIRCLING	1480-1	556 (600-1)	1540-1 3/4 616 (700-1 3/4)