

WAAS CH 56541 W16A	APP CRS 167°	Rwy Idg TDZE Apt Elev	4201 4132 4138
--	------------------------	-----------------------------	---

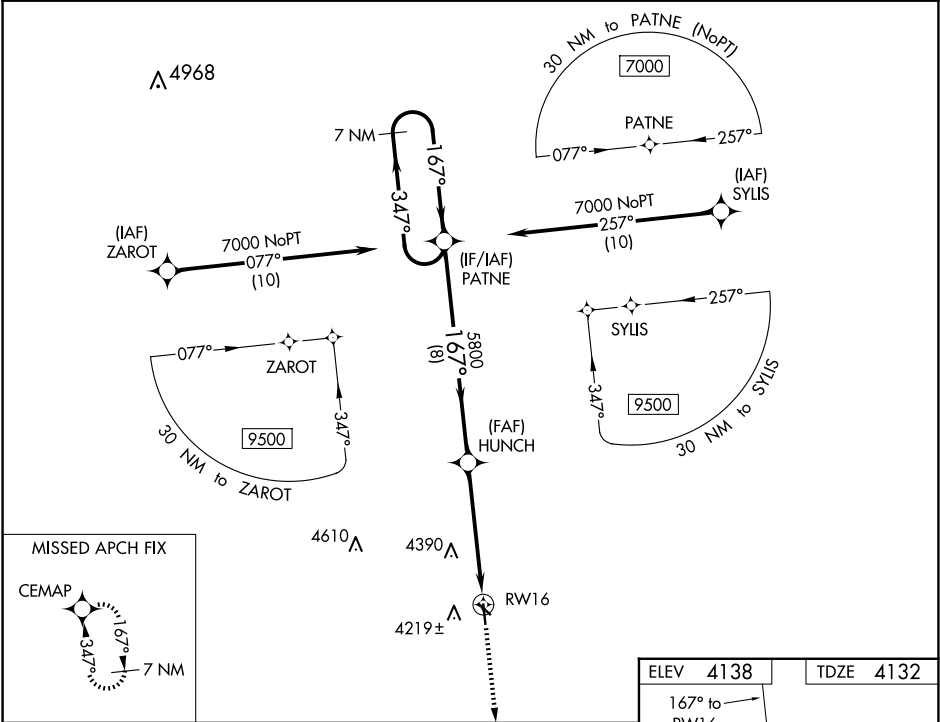
RNAV (GPS) RWY 16

YUMA MUNI (2V6)

⚠ Circling NA to Rwy's 12 and 30. For uncompensated Baro-VNAV systems, LNAV/VNAV NA below -23°C (-9°F) or above 54°C (130°F). Rwy 16 helicopter visibility reduction below ¾ SM NA. DME/DME RNP-0.3 NA.

MISSED APPROACH: Climb to 7000 direct CEMAP and hold.

AWOS-3 135.375	DENVER CENTER 133.95 317.55	UNICOM 122.8 (CTAF) 1
--------------------------	---------------------------------------	---------------------------------



7 NM Holding Pattern		PATNE		HUNCH		RW16	
7000		←347°		167°→		5800	
GP 3.00°		TCH 39		8 NM		3.8 NM	
CATEGORY		A		B		C	
LPV DA		4382-1		250 (300-1)		NA	
LNAV/VNAV DA		4452-1		320 (400-1)		NA	
LNAV MDA		4580-1		448 (500-1)		4580-1 3/8 448 (500-1 3/8)	
CIRCLING		4620-1 482 (500-1)		4640-1 502 (600-1)		4700-1 1/2 562 (600-1 1/2)	

