

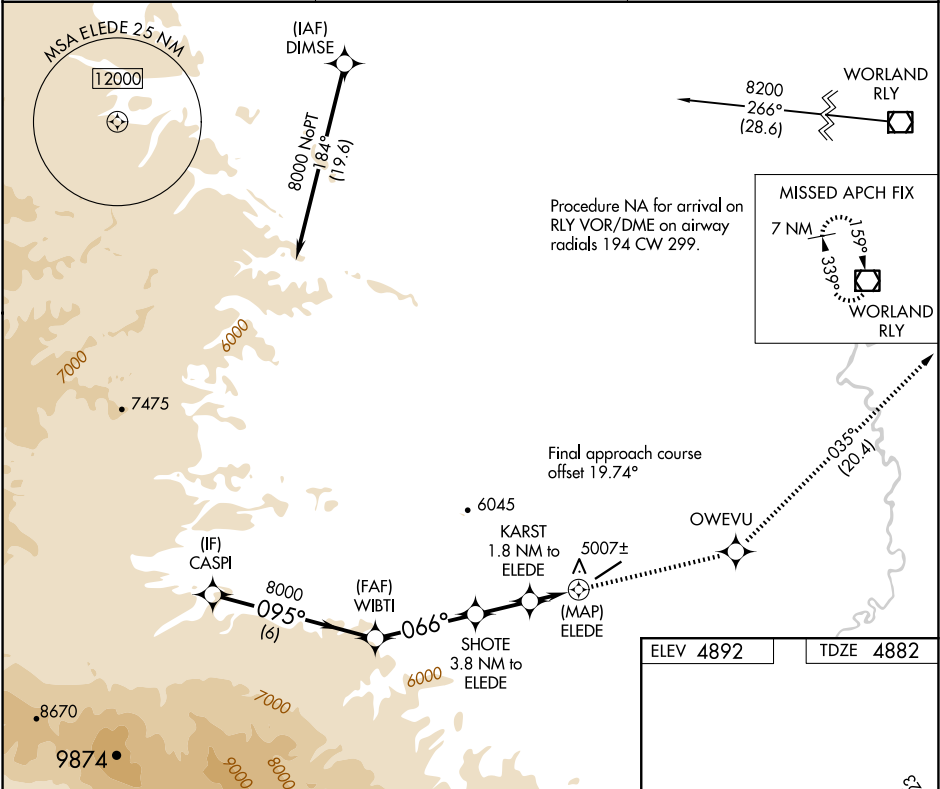
APP CRS	Rwy Ldg	6370
066°	TDZE	4882
	Apt Elev	4892

RNAV (GPS) RWY 5

HOT SPRINGS COUNTY (HSG)

<div> <div></div> <div> <div></div> <div></div> </div> </div> <div>           Circling NA northwest of Rwy 5-23.            DME/DME RNP-0.3 NA.            Rwy 5 helicopter visibility reduction below ¾ SM NA.         </div>	MISSED APPROACH: Climb to 8200 direct OWEVU and on track 035° to RLY VOR/DME and hold.
--	--

AWOS-3PT 121.125	SALT LAKE CENTER 133.25 285.6	UNICOM 122.8 (CTAF) 0
---------------------	----------------------------------	--------------------------



VGSi and descent angles not coincident (VGSi Angle 2.75/TCH 39).				
CASPI	WIBTI	SHOTE	KARST	ELEDE
8000	8000	6620	5860	
6 NM	3.7 NM	2 NM	1.8 NM	0.7 NM
095°	066°	066°	066°	066°
3.54° TCH 50	3.8 NM to ELEDE	1.8 NM to ELEDE		
8200 OWEVU	tr 035°	RLY		
0.3% UP				
6370 X 75				
066°				
CATEGORY	A	B	C	D
LNAV MDA	5240-1 358 (400-1)			NA
CIRCLING	5320-1 428 (500-1)	5540-1 648 (700-1)	5580-2 688 (700-2)	5880-3 988 (1000-2)
				REIL Rwy 5 and 23 0 MRL Rwy 5-23 0