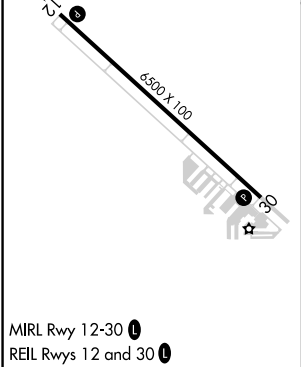
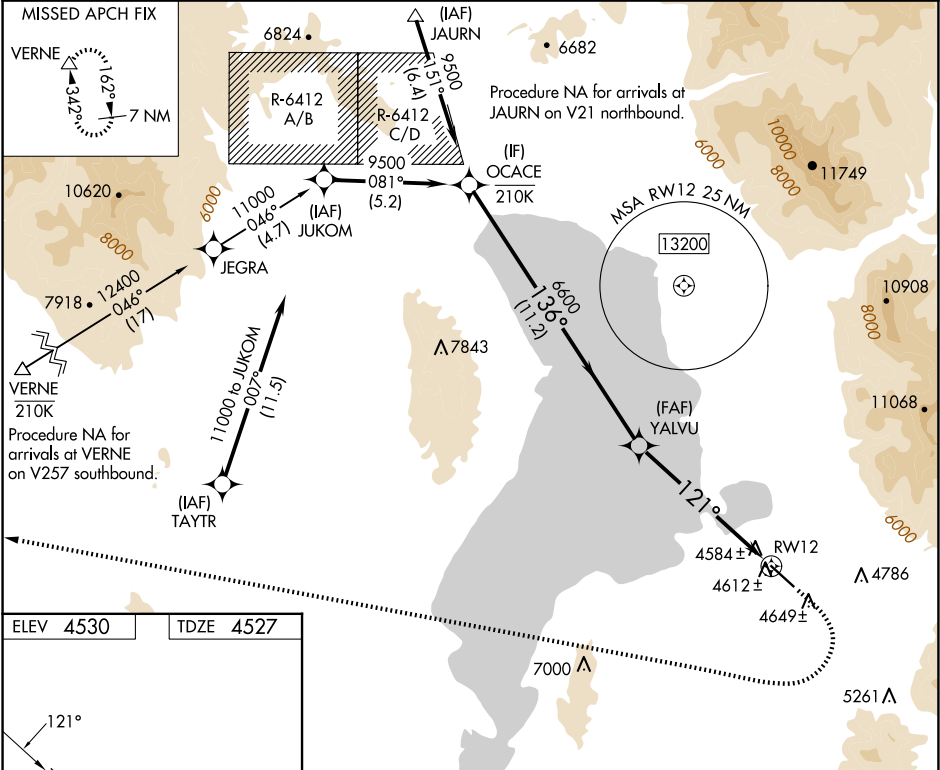


WAAS CH <b>82342</b> <b>W12B</b>	APP CRS <b>121°</b>	Rwy Ldg TDZE <b>4527</b> Apt Elev <b>4530</b>
--	------------------------	---

RNAV (GPS) Z RWY 12  
SPANISH FORK MUNI/WOODHOUSE FLD (SPK)

RNP APCH - GPS. ▼ NA -21°C	Rwy 12 helicopter visibility reduction below ¾ SM NA. When local altimeter setting not received, use PVU altimeter setting and increase all MDAs 20 feet.	MISSED APPROACH: (Do not exceed 185K until VERNE) Climb to 5000 then climbing right turn to 11500 direct VERNE and hold. *Missed approach requires minimum climb of 380 feet per NM to 7600; if unable to meet climb gradient, see RNAV (GPS) Y RWY 12.
-------------------------------------	---	--

AWOS-3PT <b>119.275</b>	SALT LAKE CITY APP CON <b>118.85 233.7</b>	CTAF <b>122.90</b>
----------------------------	---	-----------------------



OCACE		Visual Segment - Obstacles.		5000	11500	VERNE
9500		YALVU		↑	↗	△
136°		6600		RW12		
121°		11.2 NM		6.4 NM		
CATEGORY	A	B	C	D		
LP MDA*	4980-1	453 (500-1)	4980-1⅓	453 (500-1⅓)		
LNAV MDA*	4980-1	453 (500-1)	4980-1⅓	453 (500-1⅓)		