

WAAS CH <b>41250</b> <b>W18A</b>	APP CRS <b>177°</b>	Rwy Idg TDZE <b>1711</b> Apt Elev <b>1711</b>	<b>6064</b> <b>1711</b> <b>1711</b>
--	------------------------	---	---

**RNAV (GPS) Y RWY 18**  
GREGORY M SIMMONS MEML (GZN)

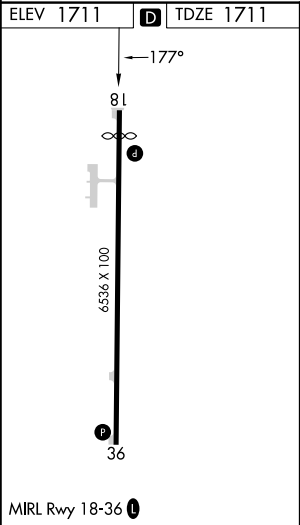
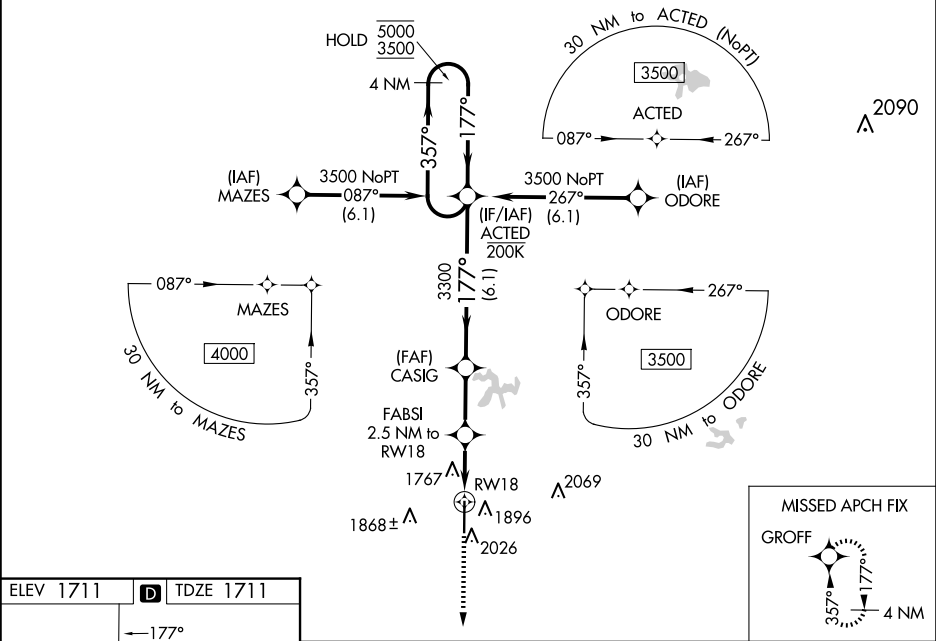
RNP APCH - GPS.

T

Circling NA east of Rwy 18-36. Baro-VNAV and VDP NA when using Eastland altimeter setting. For uncompensated Baro-VNAV systems, LNAV/VNAV NA below -18°C or above 54°C. When local altimeter setting not received, use Eastland altimeter setting and increase LPV DA to 2023 feet; increase LNAV/VNAV DA to 2067 feet; increase all MDAs 80 feet and LNAV visibility Cat C/D ¾ SM. Rwy 18 helicopter visibility reduction below ¾ SM NA.

MISSED APPROACH:  
Climb to 3700 direct GROFF and hold.

AWOS-4 <b>118.0</b>	ABILENE APP CON <b>125.0 338.3</b>	CTAF <b>122.9 0</b>
------------------------	---------------------------------------	------------------------



3700 ↑		GROFF ✦		4 NM Holding Pattern	
CASIG		FABSI 2.5 NM to RW18		ACTED	
1 NM to RW18		3300		357° → 5000 ← 177° 3500	
RW18		2540		3300	
1 NM		1.5 NM		2.4 NM	
6.1 NM				GP 3.00° TCH 45	
CATEGORY		A		B	
LPV DA		1961-1		250 (300-1)	
LNAV/VNAV DA		1985-1		274 (300-1)	
LNAV MDA		2060-1		349 (400-1)	
CIRCLING		2140-1 429 (500-1)		2180-1 469 (500-1)	
				2180-1½ 469 (500-1½)	
				2600-3 889 (900-3)	

SC-2, 10 JUL 2025 to 07 AUG 2025

SC-2, 10 JUL 2025 to 07 AUG 2025