

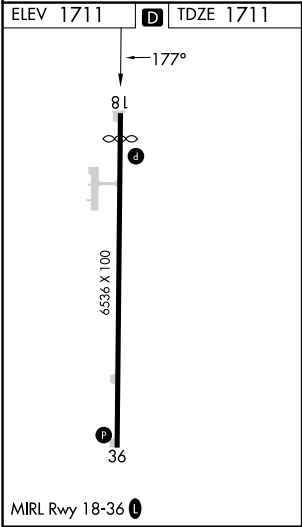
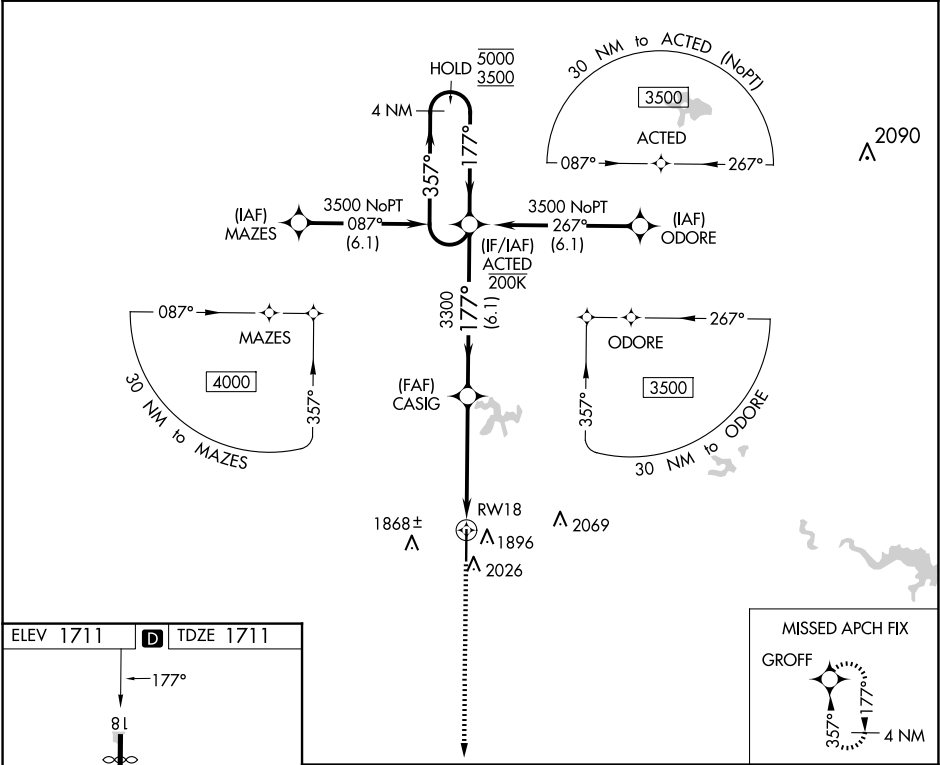
APP CRS	Rwy Idg	6064
177°	TDZE	1711
	Apt Elev	1711

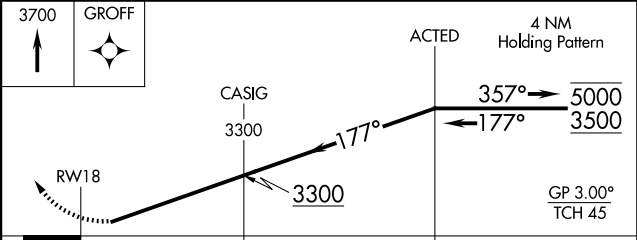
RNAV (RNP) Z RWY 18
GREGORY M SIMMONS MEML (GZN)

RNP AR APCH - GPS.

▼ Procedure NA for aircraft with wingspan greater than 136 feet. For uncompensated Baro-VNAV systems, procedure NA below -18°C or above 54°C.	MISSED APPROACH: Climb to 3700 direct GROFF and hold.
--	---

AWOS-4 118.0	ABILENE APP CON 125.0 338.3	CTAF 122.9
-----------------	--------------------------------	---------------



3700 ↑	GROFF ✦				
					
CATEGORY	A	B	C	D	
RNP 0.30 DA	1990-1 279 (300-1)			2011-1 300 (300-1)	
AUTHORIZATION REQUIRED					

SC-2, 10 JUL 2025 to 07 AUG 2025

SC-2, 10 JUL 2025 to 07 AUG 2025