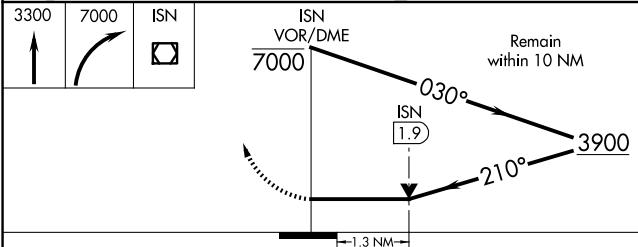
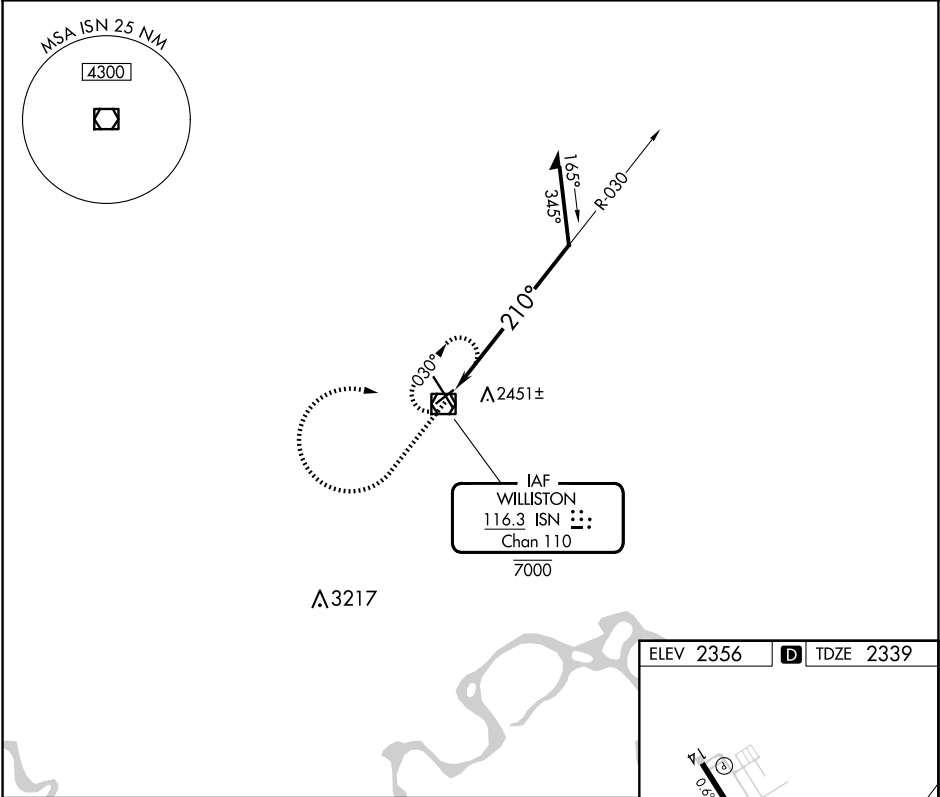


VOR/DME ISN 116.3 Chan 110	APP CRS 210°	Rwy Idg TDZE Apt Elev 4502 2339 2356
--	------------------------	--

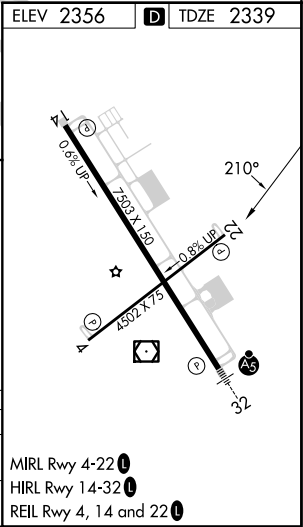
VOR RWY 22
WILLISTON BASIN INTL (XWA)

MISSED APPROACH: Climb to 3300 then climbing right turn to 7000 direct ISN VOR/DME and hold, continue climb-in-hold to 7000.

ASOS 125.925	SALT LAKE CITY CENTER 126.85 305.2	UNICOM 122.8 (CTAF)
------------------------	--	-------------------------------



CATEGORY	A	B	C	D
S-22	2760-1	421 (500-1)	2760-1¼	421 (500-1¼)
CIRCLING	2760-1 404 (500-1)	2820-1 464 (500-1)	2820-1½ 464 (500-1½)	2920-2 564 (600-2)



NC-1, 10 JUL 2025 to 07 AUG 2025

NC-1, 10 JUL 2025 to 07 AUG 2025