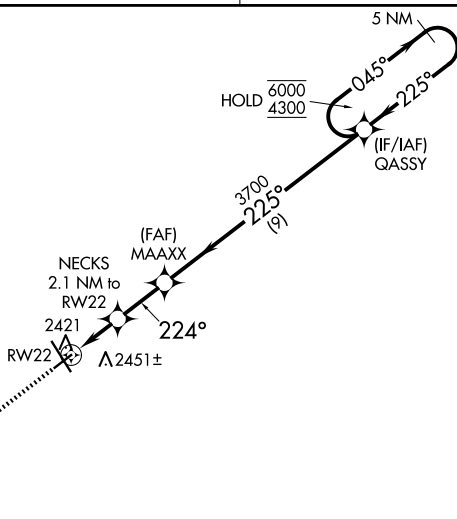
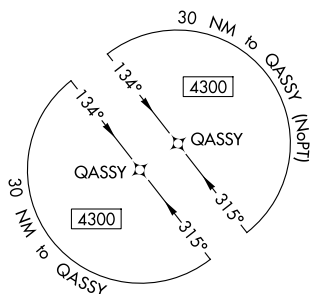
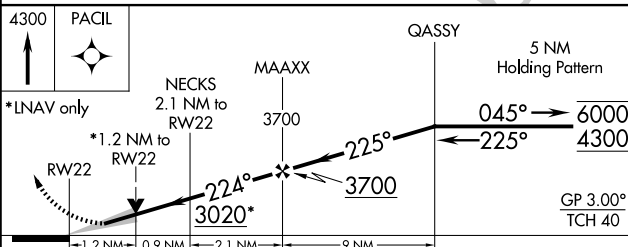



RNAV (GPS) RWY 22
WILLISTON BASIN INTL (XWA)

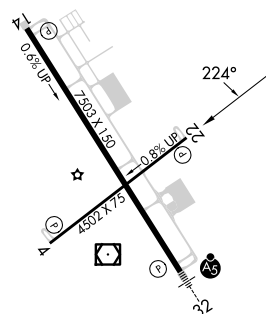
MISSED APPROACH: Climb to 4300 direct PACIL and hold.

UNICOM
122.8 (CTAF) **L**

Λ3217



CATEGORY		A	B	C	D
LPV	DA	2539-1 200 (200-1)			
LNAV/ VNAV	DA	2589-1 250 (300-1)			
LNAV	MDA	2740-1 401 (400-1)		2740-1½ 401 (400-1½)	
 CIRCLING		2760-1 404 (500-1)	2820-1 464 (500-1)	2820-1½ 464 (500-1½)	2920-2 564 (600-2)



MIRL Rwy 4-22 **L**
HIRL Rwy 14-32 **L**
REIL Rwy 4, 14 and 22 **L**