

WAAS CH 42538 W31A	APP CRS 313°	Rwy Idg 5701 TDZE 2965 Apt Elev 2965
--	------------------------	---

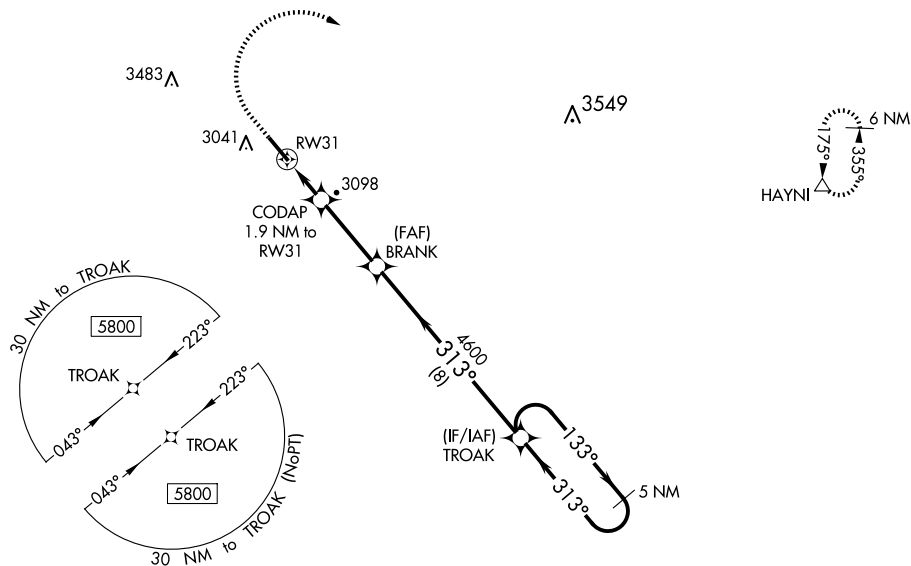
RNAV (GPS) RWY 31

BOWMAN RGNL (BWW)

V For uncompensated Baro-VNAV systems, LNAV/VNAV NA below -20°C (-4°F) or above 54°C (130°F). DME/DME RNP-0.3 NA. When local altimeter setting not received, use Hettinger altimeter setting and increase all DA 102 feet, and all MDA 120 feet; increase LPV and LNAV/VNAV visibility ¼ mile all Cats, increase LNAV Cat C visibility ¼ mile. Baro-VNAV and VDP NA when using Hettinger altimeter setting.

MISSED APPROACH: Climb to 3500 then climbing right turn to 6000 direct HAYNI and hold.

AWOS-3PT 118.075	SALT LAKE CITY CENTER 126.85 305.2	UNICOM 122.8 (CTAF) 0
----------------------------	--	---------------------------------



ELEV 2965		TDZE 2965
-----------	--	-----------

