

COPTER RNAV (GPS) RWY 24

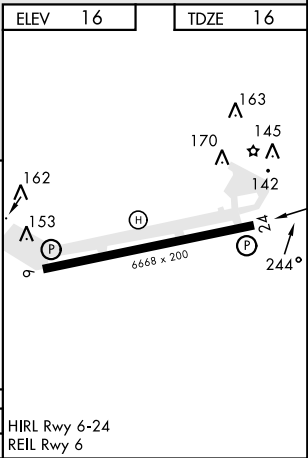
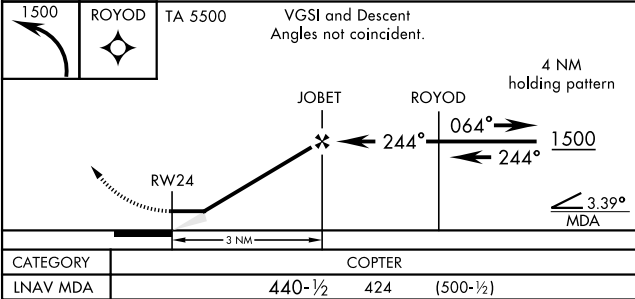
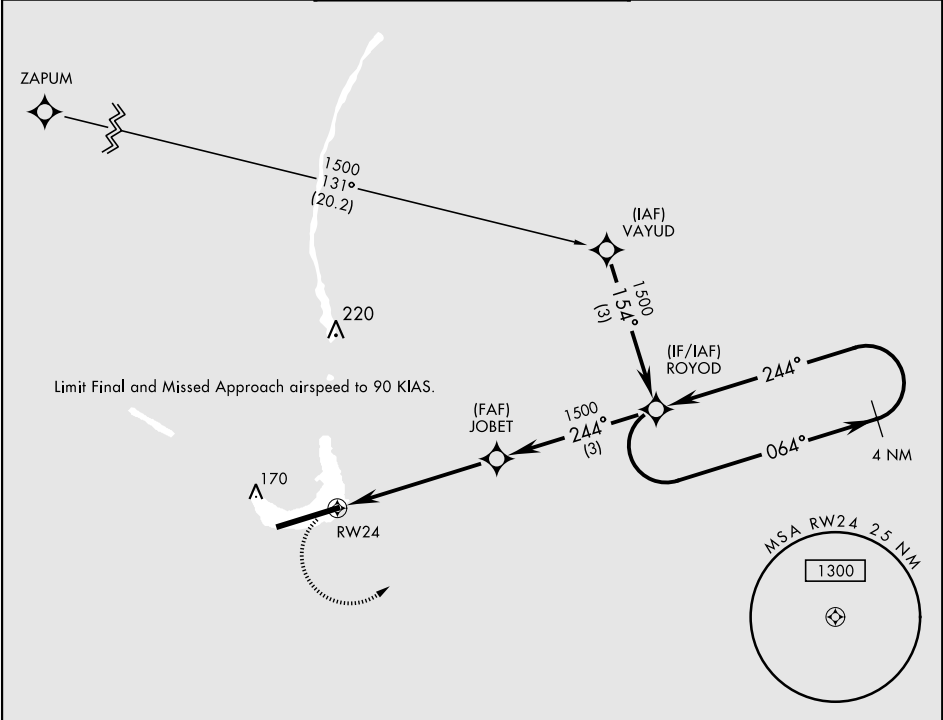
APCH CRS	Rwy Idg
244°	6668
TDZE	16
Arpt Elev	16

[USA]

BUCHOLZ AAF (PKWA)

When control tower closed, obtain local altimeter setting from Base Ops on 118.8. DME/DME RNP-0.3 NA	MISSED APPROACH: Climbing left turn to 1500 direct ROYOD and hold.
---	--

AWOS 119.675	TOWER ★ 126.2 360.2	GND CON 121.9
-----------------	------------------------	------------------



COPTER RNAV (GPS) RWY 24