

WAAS CH <b>93740</b> <b>W24A</b>	APP CRS <b>240°</b>	Rwy Ldg TDZE Apt Elev	<b>6051</b> <b>7913</b> <b>7955</b>
--	------------------------	-----------------------------	---

RNAV (GPS) RWY 24

ASTRONAUT KENT ROMINGER (RCV)

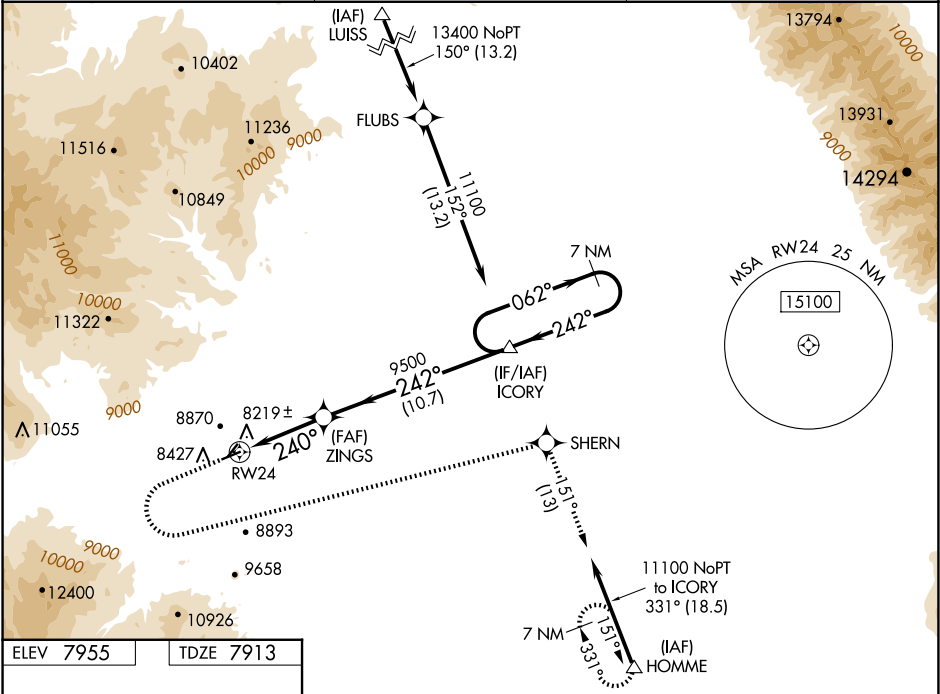
⚠

For uncompensated Baro-VNAV systems, LNAV/VNAV NA below -30°C (-22°F) or above 54°C (130°F). Circling NA northwest of Rwy 6-24. Circling Rwy 6 NA at night. DME/DME RNP-0.3 NA. Circling NA to Rwy 3/21.

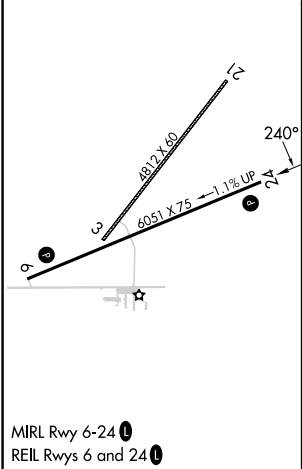
MISSED APPROACH:

Climb to 8600 then climbing left turn to 11100 direct SHERN and on track 151° to HOMME and hold. #Missed approach requires a minimum climb of 310 feet per NM to 9200.

AWOS-3PT <b>118.275</b>	DENVER CENTER <b>128.375 379.95</b>	CTAF <b>122.90</b>
----------------------------	--	-----------------------



ELEV 7955	TDZE 7913
-----------	-----------



8600	11100	SHERN	tr 151°	HOMME	VGSI and RNAV glidepath not coincident (VGSI Angle 3.00/TCH 40).
					7 NM Holding Pattern
*LNAV only					
ZINGS					
*2.3 NM to RW24					
RW24					
2.3 NM					2.6 NM
10.7 NM					
					GP 3.00° TCH 51
CATEGORY	A	B	C	D	
LPV DA #	8163-1	250 (300-1)		NA	
LPV DA	8220-1 1/8	307 (300-1 1/8)		NA	
LNAV/VNAV DA	8443-1 7/8	530 (500-1 7/8)		NA	
LNAV MDA	8680-1	8680-1 1/4		NA	
	767 (800-1)	767 (800-1 1/4)			
CIRCLING	8700-1	8840-1 1/4		NA	
	745 (800-1)	885 (900-1 1/4)			