

RNP APCH - GPS.

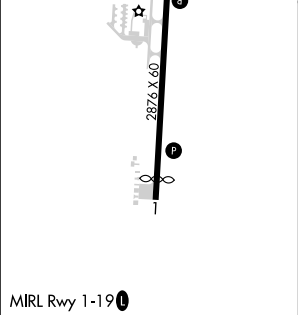
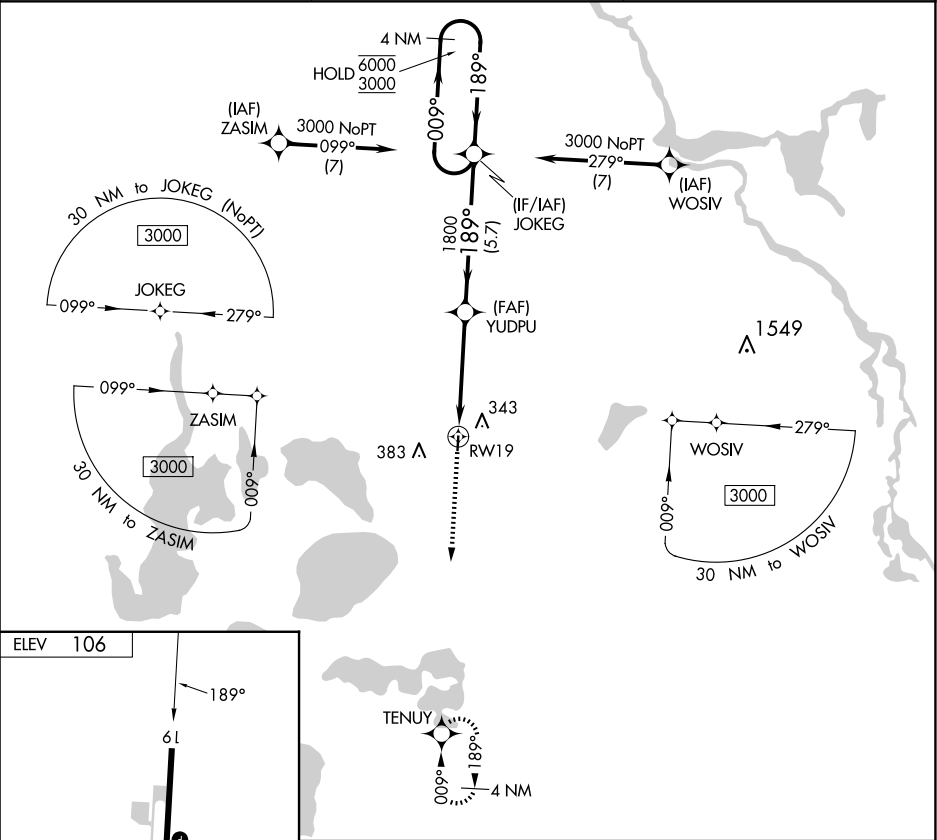
▼

NA

Procedure NA at night.  
Rwy 1, 19 helicopter visibility reduction below 1 SM NA.  
Use Leesburg altimeter setting.

MISSED APPROACH: Climb to 3000 direct TENUY and hold, continue climb-in-hold to 3000.

LEE ASOS <b>134.325</b>	ORLANDO APP CON <b>135.3 351.9</b>	CTAF <b>122.9 0</b>
----------------------------	---------------------------------------	------------------------



3000	TENUY	JOKEG	4 NM Holding Pattern
↑	✧	✧	✧
YUDPU	1800	009° → 6000 ← 189° 3000	
RW19	3.50° TCH 40	5.7 NM	
4.5 NM			
CATEGORY	A	B	C D
CIRCLING	760-1 654 (700-1)	780-1 674 (700-1)	NA