

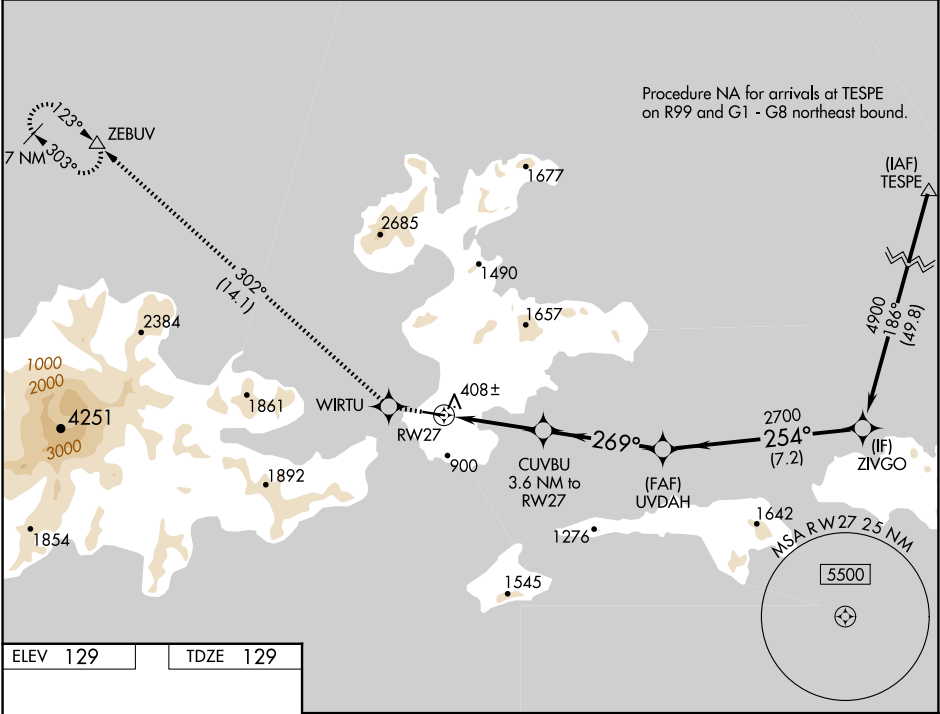
APP CRS	Rwy Idg	4500
269°	TDZE	129
	Apt Elev	129

RNAV (GPS) RWY 27

AKUTAN (7AK)(PAUT)

<div><div>For uncompensated Baro-VNAV systems, LNAV/VNAV NA below -19°C (-2°F) or above 54°C (130°F). DME/DME RNP-0.3 NA. Visibility reduction by helicopters below 1 SM NA. Procedure NA at night.</div></div>	MISSED APPROACH: Climb to 9000 direct WIRTU and on track 302° to ZEBUV and hold, continue climb-in-hold to 9000.
---	--

AWOS-3P 129.05	ANCHORAGE CENTER 121.4	GCO 130.3	CTAF 122.9
-------------------	---------------------------	--------------	---------------



ELEV 129	TDZE 129
----------	----------

9000

WIRTU

tr 302°

ZEBUV

*LNAV only

CUVBV

3.6 NM to RW27

269°

2700

UVDAH

254°

ZIVGO

4900

GP 3.00°

TCH 45

CATEGORY	A	B	C	D
LNAV/VNAV DA	848-2½ 719 (800-2½)			
LNAV MDA	1140-1¼ 1011 (1100-1¼)	1140-1½ 1011 (1100-1½)	1140-3 1011 (1100-3)	
CIRCLING	1140-1¼ 1011 (1100-1¼)	1200-1½ 1071 (1100-1½)	1600-3 1471 (1500-3)	1960-3 1831 (1900-3)

0.4% UP

27

269°

MIRL Rwy 9-27

AKUTAN, ALASKA
Amdt 1 13NOV14

54°09'N-165°36'W

AKUTAN (7AK)(PAUT)

RNAV (GPS) RWY 27