

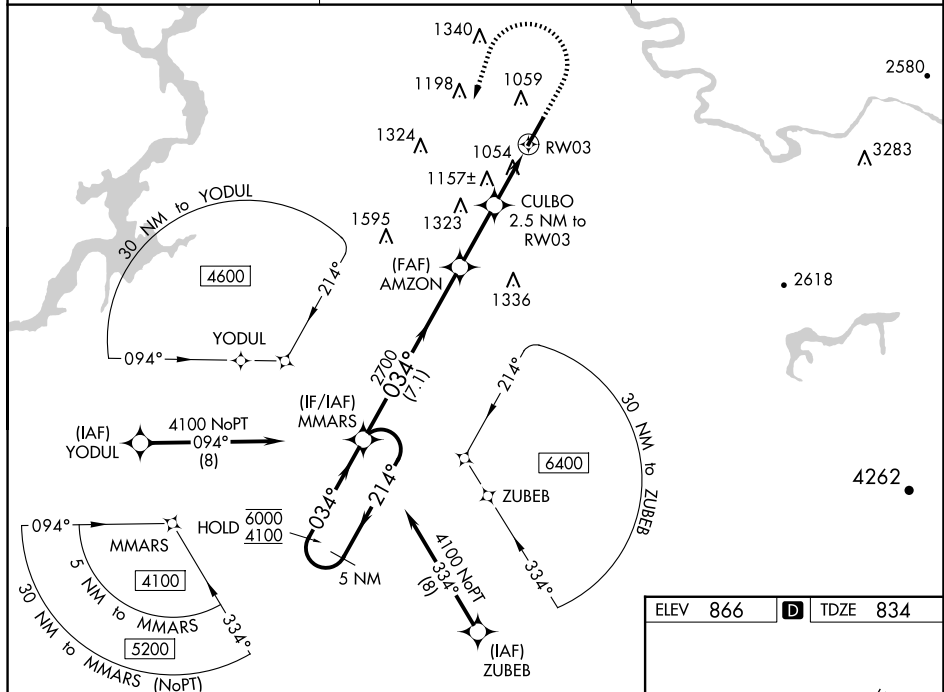
RNAV (GPS) RWY 3

CLEVELAND RGNL JETPORT (RZR)

T Rwy 3 helicopter visibility reduction below $\frac{3}{4}$ SM NA.
A For uncompensated Baro-VNAV systems, LNAV/VNAV NA below -16°C or above 54°C.

MISSED APPROACH: Climb to 1800 then climbing left turn to 4100 direct MMARS and hold, continue climb-in-hold to 4100.

UNICOM
122.7 (CTAF) **L**



ELEV	866	D	TDZE	834
------	-----	----------	------	-----

5 NM Holding Pattern

6000 ← 214°

4100 → 034°

GP 3.40° TCH 55

MMARS

AMZON

2700

2700

*1780

VGSIs and RNAV glidepath not coincident (VGSIs Angle 3.40/TCH 46).

1800

4100

MMARS

*LNAV only.

CULBO

2.5 NM to RW03


*1.5 NM to RW03

RW03

2.5 NM

1 NM

1.5 NM

CATEGORY		A	B	C	D
LPV	DA	1034-3 $\frac{3}{4}$	200 (200-3 $\frac{3}{4}$)	1104-7 $\frac{7}{8}$	270 (300-7 $\frac{7}{8}$)
LNNAV/ VNAV	DA	1437-1 $\frac{1}{4}$ 603 (600-1 $\frac{1}{4}$)			
LNNAV	MDA	1420-1	586 (600-1)	1420-1 $\frac{3}{4}$	586 (600-1 $\frac{3}{4}$)
 CIRCLING		1460-1	594 (600-1)	1580-2 714 (800-2)	1780-3 914 (1000-3)

