

WAAS
CH **65644**
W26A

APP CRS
260°

Rwy Idg
TDZE
Apt Elev

4491
3015
3025

RNAV (GPS) RWY 26

BIG HORN COUNTY (ØØTU)

RNP APCH-GPS.

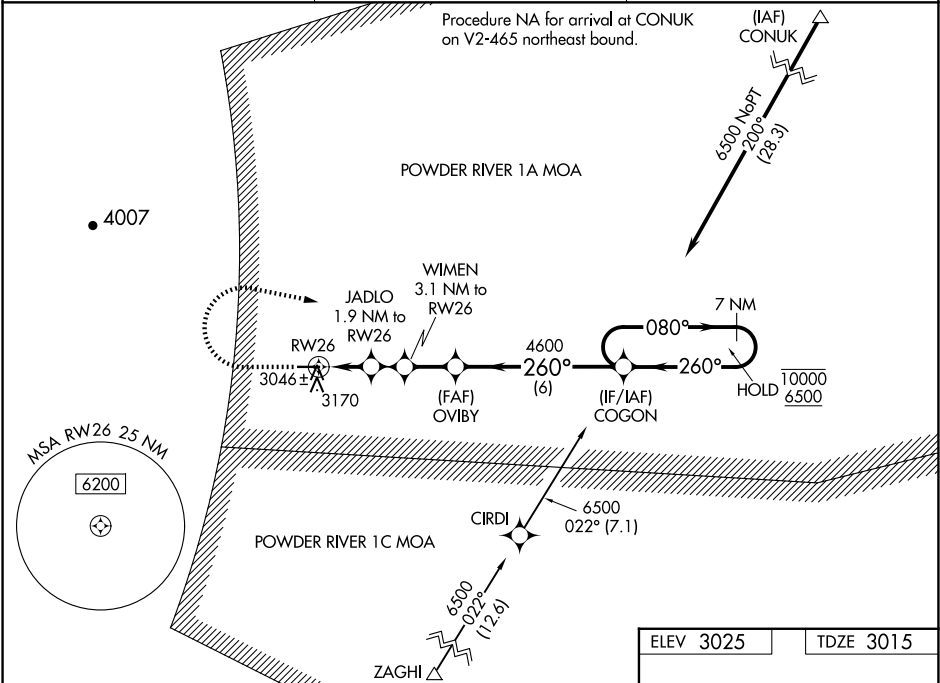
▼

▲

For uncompensated Baro-VNAV systems, LNAV/VNAV NA below -20°C or above 54°C.

MISSED APPROACH: Climb to 3700 then climbing right turn to 6500 direct COGON and hold, continue climb-in-hold to 6500.

AWOS-3 118.325	SALT LAKE CENTER 132.425 317.45	UNICOM 122.8 (CTAF) Ø
--------------------------	---	---------------------------------



3700

6500

COGON

0.8 NM

1.1 NM

1.2 NM

1.8 NM

6 NM

3640

4020

4600

4600

10000

6500

GP 3.00°

TCH 40

CATEGORY	A	B	C	D
LPV DA	3215-1	200 (200-1)		NA
LNAV/VNAV DA	3265-1	250 (300-1)		NA
LNAV MDA	3300-1	285 (300-1)		NA
CIRCLING	3480-1 455 (500-1)	3500-1 475 (500-1)		NA

ELEV 3025

TDZE 3015

260° to RWY 26

4491 X 75

0.5% UP

MIRL Rwy 8-26 Ø