

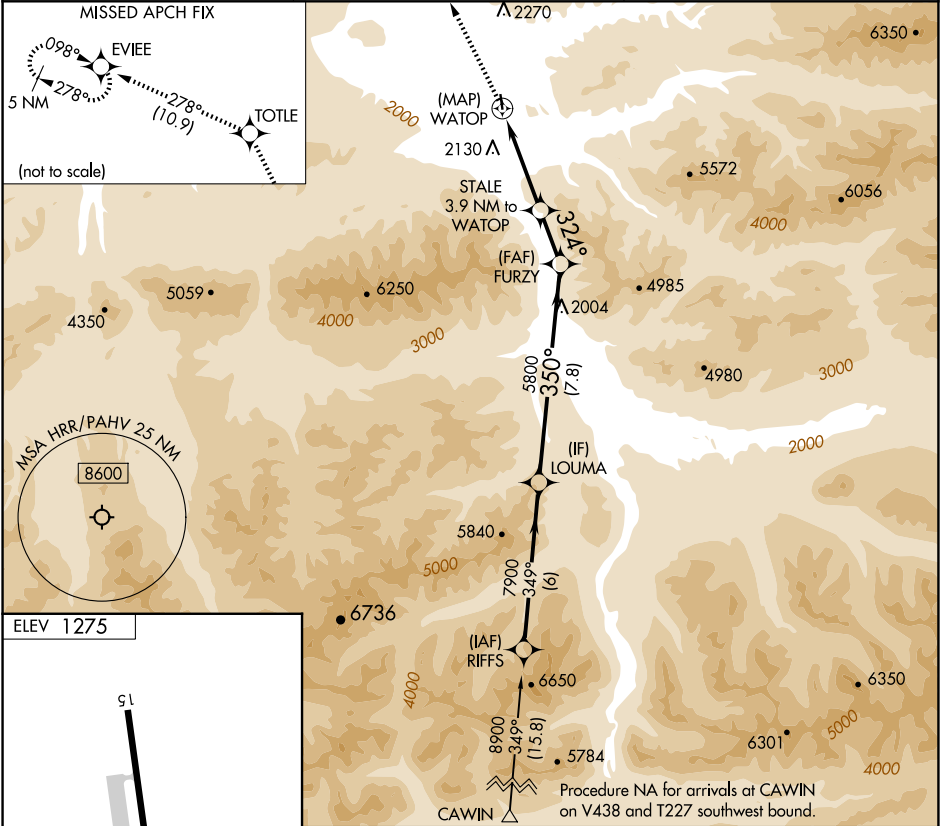
APP CRS	Rwy Ldg	N/A
324°	TDZE	N/A
	Apt Elev	1275

RNAV (GPS)-A

HEALY RIVER (HRR) (PAHV)

RNP APCH - GPS.		MISSED APPROACH: Climb to 5800 direct TOTLE and on track 278° to EVIEE and hold.
	Procedure NA at night. Rwy 15 and 33 helicopter visibility reduction below 1 SM NA. Use McKinley Park altimeter setting; when not received, procedure NA.	
	-14°C	

INR/PAIN AWOS-3P 135.75	ANCHORAGE CENTER 120.9 319.2	CTAF 122.9
----------------------------	---------------------------------	---------------



5800	TOTLE	fr 278°	EVIEE	LOUMA
		STALE 3.9 NM to WATOP	FURZY	
			324°	350°
			5200	7900
			5800	
			3.9 NM	2 NM
			7.8 NM	
CATEGORY	A	B	C	D
CIRCLING	3640-1¼ 2365 (2400-1¼)	3640-1½ 2365 (2400-1½)	3720-3 2445 (2500-3)	NA