

APP CRS  
**088°**

Rwy Ldg  
TDZE  
Apt Elev  
**N/A**  
**N/A**  
**907**

RNAV (GPS)-A  
EAGLE (EAA) (PAEG)

▼

⚠

❄

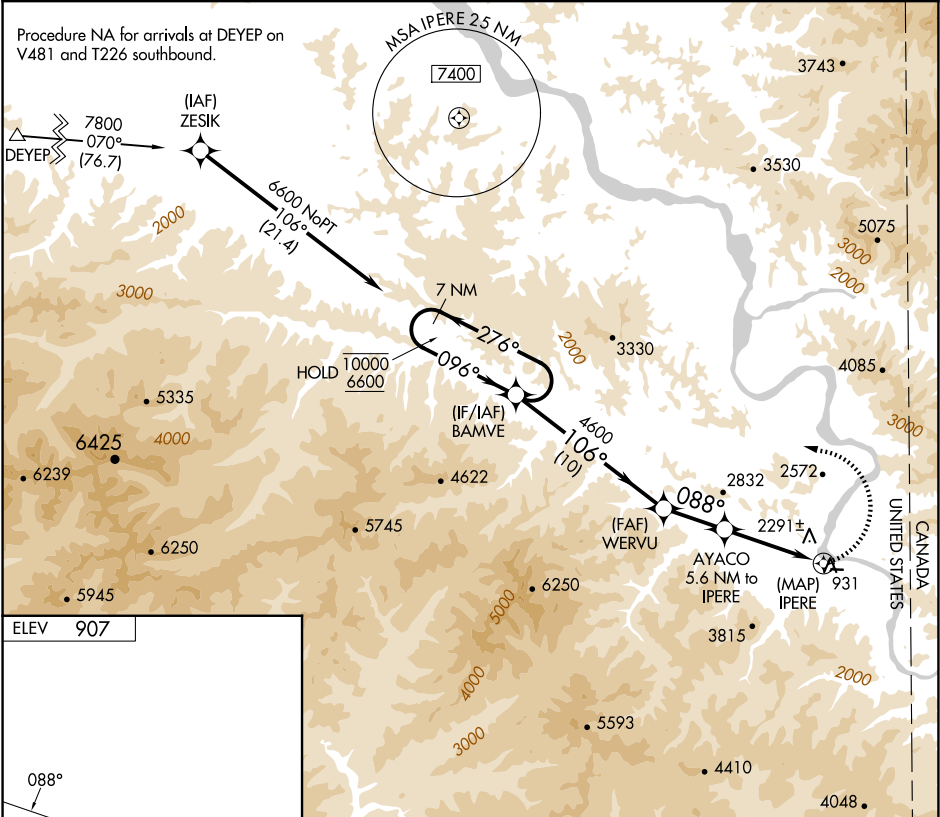
-12°C

RNP APCH.

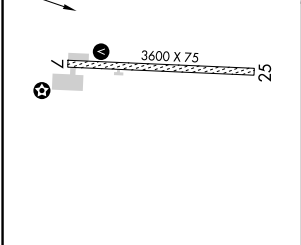
Circling NA north of Rwy 7-25. Procedure NA at night.  
When local altimeter setting not received, procedure NA.

MISSED APPROACH: (Do not exceed 210K until BAMVE) Climbing left turn to 6600 direct BAMVE and hold, continue climb-in-hold to 6600.

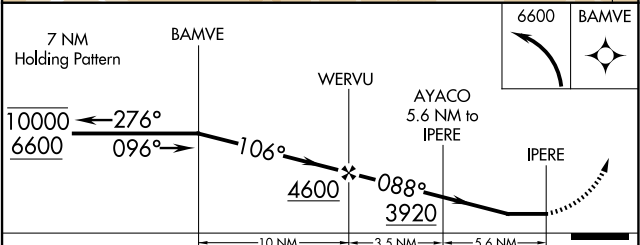
ASOS <b>135.55</b>	ANCHORAGE CENTER <b>135.3 322.5</b>	NORTHWAY RADIO <b>122.3</b>	UNICOM <b>122.8 (CTAF)</b> 
-----------------------	--	--------------------------------	---



ELEV **907**



7 NM Holding Pattern



CATEGORY	A	B	C	D
CIRCLING	2720-1¼ 1813 (1900-1¼)	2720-1½ 1813 (1900-1½)	3020-3 2113 (2200-3)	NA