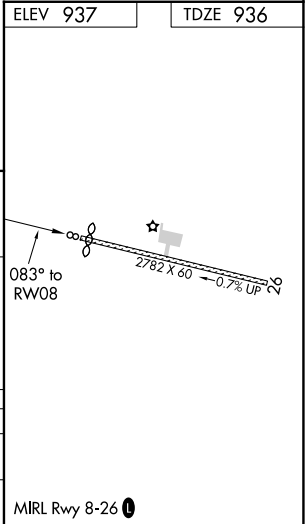
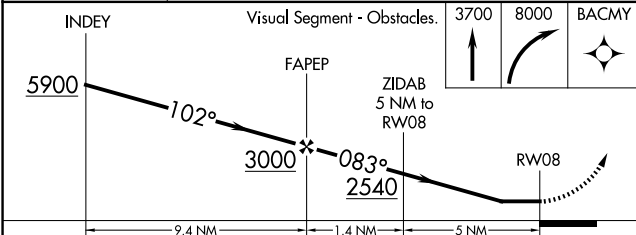
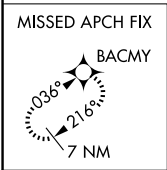
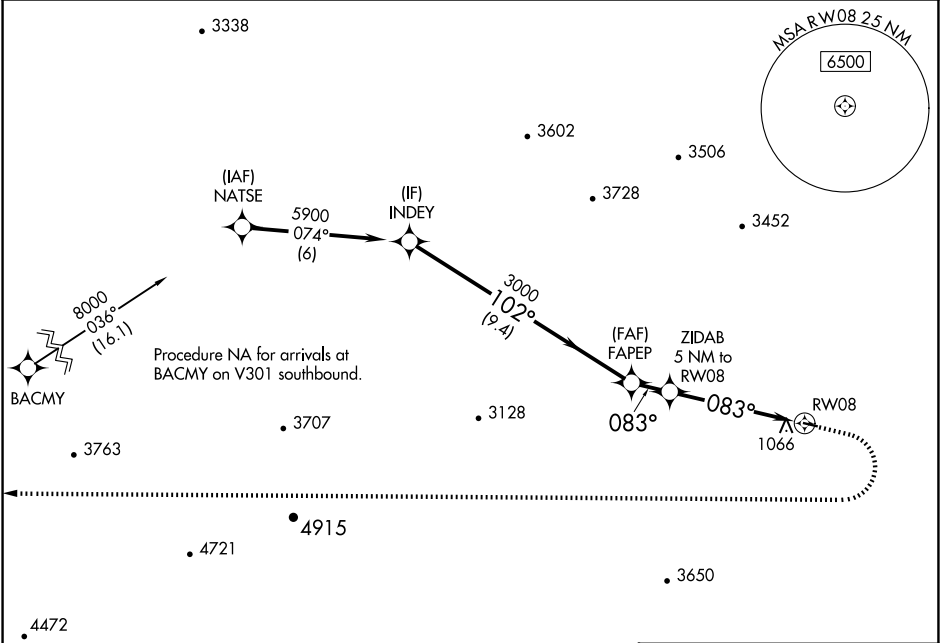


APP CRS	Rwy Idg	2661
083°	TDZE	936
	Apt Elev	937

RNAV (GPS) RWY 8  
CENTRAL (CEM) (PACE)

<div><div>NA</div><div>DME/DME RNP-0.3 NA. Use Fort Yukon altimeter setting; when not received, procedure NA. Helicopter visibility reduction below 1 SM NA. Night Landing: Rwy 8 NA.</div></div>	MISSED APPROACH: Climb to 3700 then climbing right turn to 8000 direct BACMY and hold.
---	--

FYU/PFYU AWOS-3P 125.8	ANCHORAGE CENTER 135.0 284.7	CTAF 122.9 0
---------------------------	---------------------------------	-----------------



CATEGORY	A	B	C	D
LNAB MDA	2420-1¼ 1484 (1500-1¼)	2420-1½ 1484 (1500-1½)	NA	
CIRCLING	2420-1¼ 1483 (1500-1¼)	2420-1½ 1483 (1500-1½)	NA	

AK, 12 JUN 2025 to 07 AUG 2025

AK, 12 JUN 2025 to 07 AUG 2025