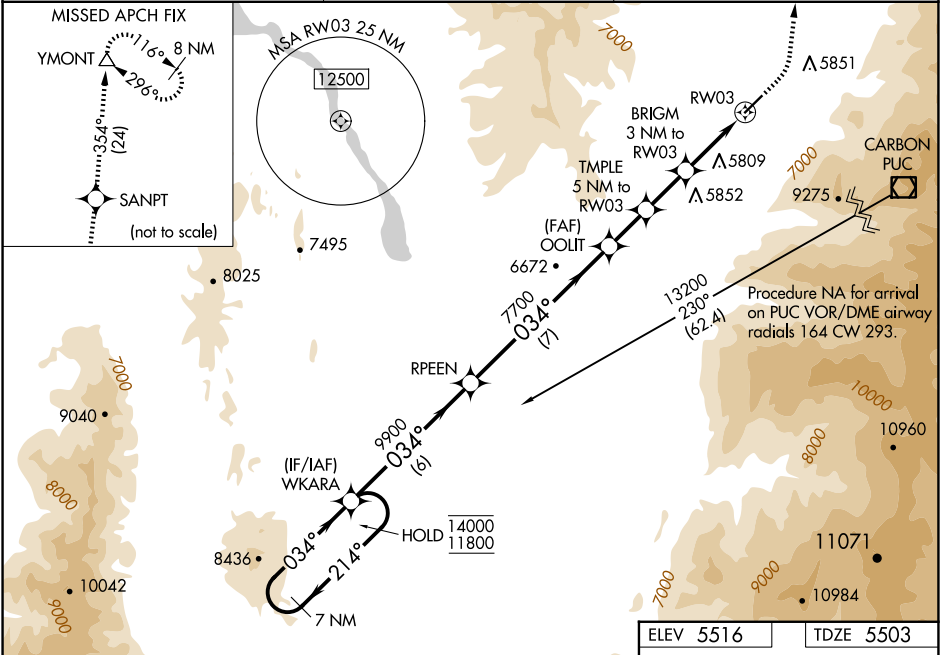


WAAS CH 65839 W03A	APP CRS 034°	Rwy Idg TDZE Apt Elev	5021 5503 5516
--	------------------------	-----------------------------	---

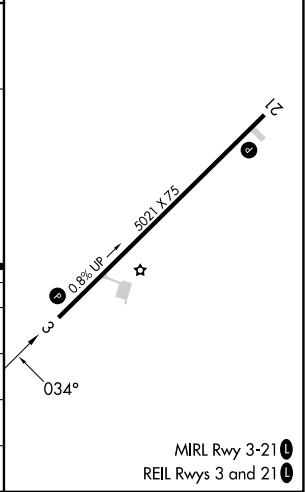
RNAV (GPS) RWY 3
MANTI-EPHRAIM (41U)

RNP APCH - GPS.	MISSED APPROACH: Climb to 6020 then climbing left turn to 13000 direct SANPT and on track 354° direct YMONT and hold.
▼ When local altimeter setting not received, procedure NA. Procedure ▲ NA at night. Rwy 3 helicopter visibility reduction below 1 SM NA. Circling NA southeast of Rwy 3-21. Baro-VNAV NA.	

AWOS-3PT 120.025	SALT LAKE CENTER 133.6 296.25	UNICOM 122.8 (CTAF) 0
----------------------------	---	---------------------------------



7 NM Holding Pattern	WKARA	RPEEN	OOLIT	TMPL 5 NM to RW03	BRIGM 3 NM to RW03	RW03
14000 ← 214°	11800 → 034°	9900	7700	7100	6460	
GP 3.00° TCH 40						
	6 NM	7 NM	1.9 NM	2 NM	3 NM	
CATEGORY	A	B	C	D		
LPV DA	5781-1 278 (300-1)					
LNAV/VNAV DA	5823-1 320 (400-1)				NA	
LNAV MDA	6000-1 497 (500-1)		6180-1 677 (700-1 1/2)			
CIRCLING	6000-1 484 (500-1)		6280-2 764 (800-2 1/4)		7620-3 2104 (2200-3)	



RNAV (GPS) RWY 3
MANTI-EPHRAIM (41U)

SW-4, 10 JUL 2025 to 07 AUG 2025

SW-4, 10 JUL 2025 to 07 AUG 2025