

WAAS CH 42744 W34A	APP CRS 343°	Rwy Idg TDZE 5365 Apt Elev 5374
--	------------------------	---

RNAV (GPS) RWY 34

LIMON MUNI (LIC)

RNP APCH - GPS.

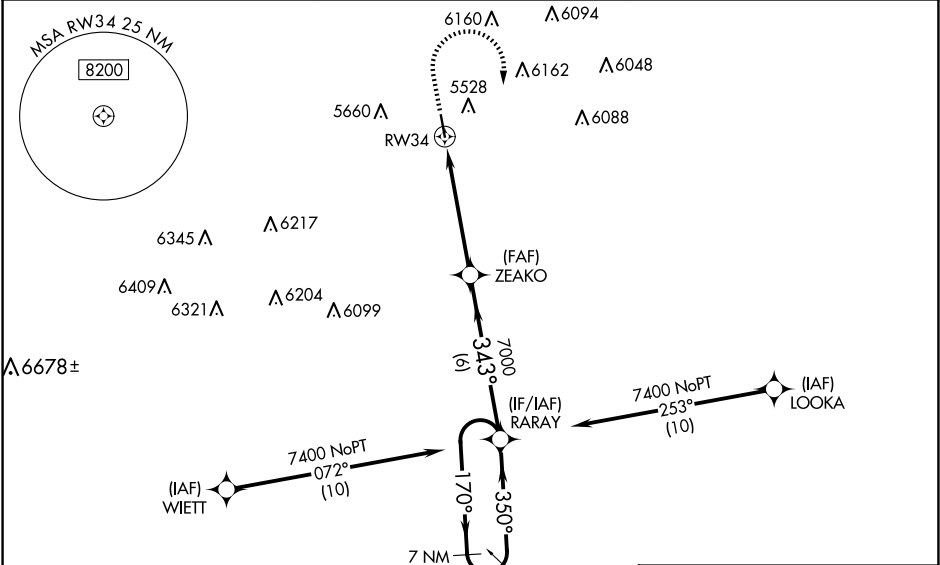
▼

⚠

For uncompensated Baro-VNAV systems, LNAV/VNAV NA below -25°C or above 54°C. Rwy 34 helicopter visibility reduction below ¾ SM NA. Baro-VNAV and VDP NA when using CFO altimeter setting. When local altimeter not received, use CFO altimeter setting and increase LPV DA to 5751 feet and all visibilities ½ SM. Increase LNAV/VNAV DA to 5960 feet and all visibilities ¾ SM. Increase all MDAs 140 feet and LNAV visibility Cat B/C ¾ SM, and Circling visibility Cat B/C ½ SM.

MISSED APPROACH: Climb to 6400, then climbing right turn to 7400 direct RARAY and hold.

ASOS 121.125	DENVER CENTER 133.4 377.175	CTAF 122.9
------------------------	---------------------------------------	----------------------



ELEV 5374		TDZE 5365	
6400		7400	
RARAY		RARAY	
ZEAKO		RARAY	
1.9 NM to RW34		7000	
7000		343°	
7000		350°	
1.9 NM		3.2 NM	
6 NM		7 NM	
7000		8000	
7400		7400	
GP 3.00°		TCH 39	
CATEGORY	A	B	D
LPV DA	5615-1	250 (300-1)	NA
LNAV/VNAV DA	5824-1 ¾	459 (500-1 ¾)	NA
LNAV MDA	6000-1	635 (700-1)	NA
CIRCLING	6000-1	626 (700-1)	NA

LIMON MUNI (LIC)

RNAV (GPS) RWY 34