

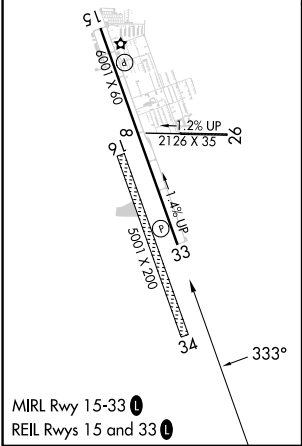
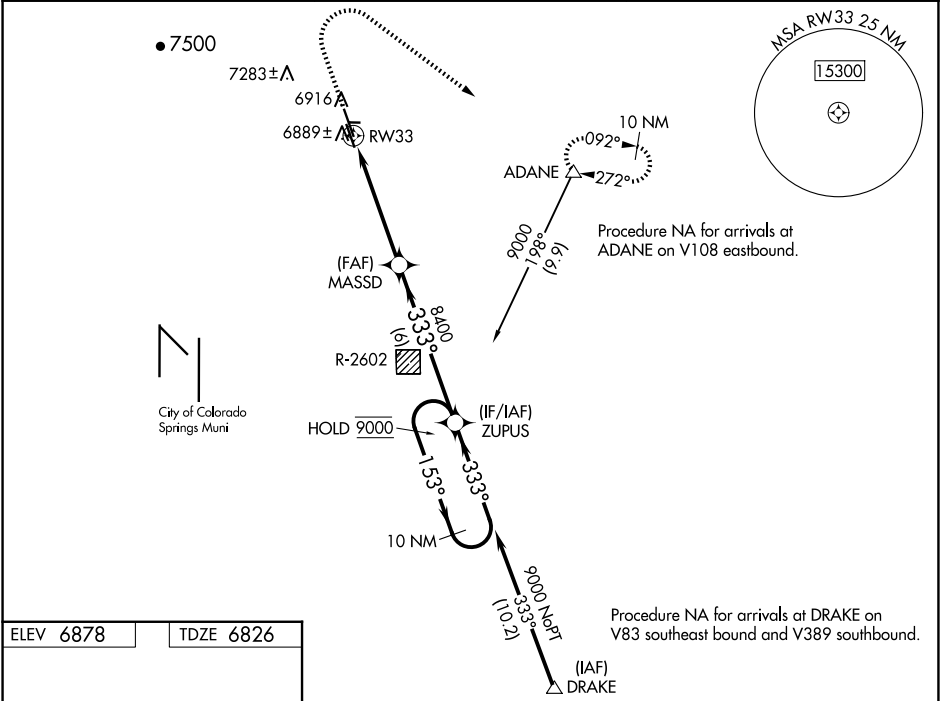
WAAS CH 90146 W33A	APP CRS 333°	Rwy Idg TDZE 6826 Apt Elev 6878	6001
--	------------------------	---	-------------

RNAV (GPS) RWY 33

MEADOW LAKE (F'L Y)

RNP APCH - GPS. ⚠ For uncompensated Baro-VNAV systems, LNAV/VNAV NA below -28°C or above 54°C. Circling NA Rws 16, 8, 26 and 34. Circling Rwy 15 NA at night. Circling NA southwest of Rwy 15-33.	MISSED APPROACH: Climb to 7300, then climbing right turn to 9000 direct ADANE and hold, continue climb-in-hold to 9000.
--	---

AWOS-3PT 118.45	SPRINGS APP CON 124.0 257.875	UNICOM 122.7 (CTAF) 0
---------------------------	---	---------------------------------



<div><div>7300 ↑</div><div>9000 ↷</div><div>ADANE △</div></div>			<div><div>MASSD 8400</div><div>ZUPUS 10 NM Holding Pattern 153° → ← 333° 9000</div></div>		
<div><div>RW33 ↙</div><div>1 NM to RW33</div><div>8400</div><div>333°</div></div>			<div><div>GP 3.00° TCH 40</div></div>		
<div><div>1 NM</div><div>4 NM</div><div>6 NM</div></div>					
CATEGORY	A	B	C	D	
LPV DA	7026-¾	200 (200-¾)	NA		
LNAV/VNAV DA	7079-¾	253 (300-¾)	NA		
LNAV MDA	7140-1	314 (300-1)	NA		
CIRCLING	7340-1 462 (500-1)	7440-1 562 (600-1)	NA		

SW-1, 10 JUL 2025 to 07 AUG 2025

SW-1, 10 JUL 2025 to 07 AUG 2025