

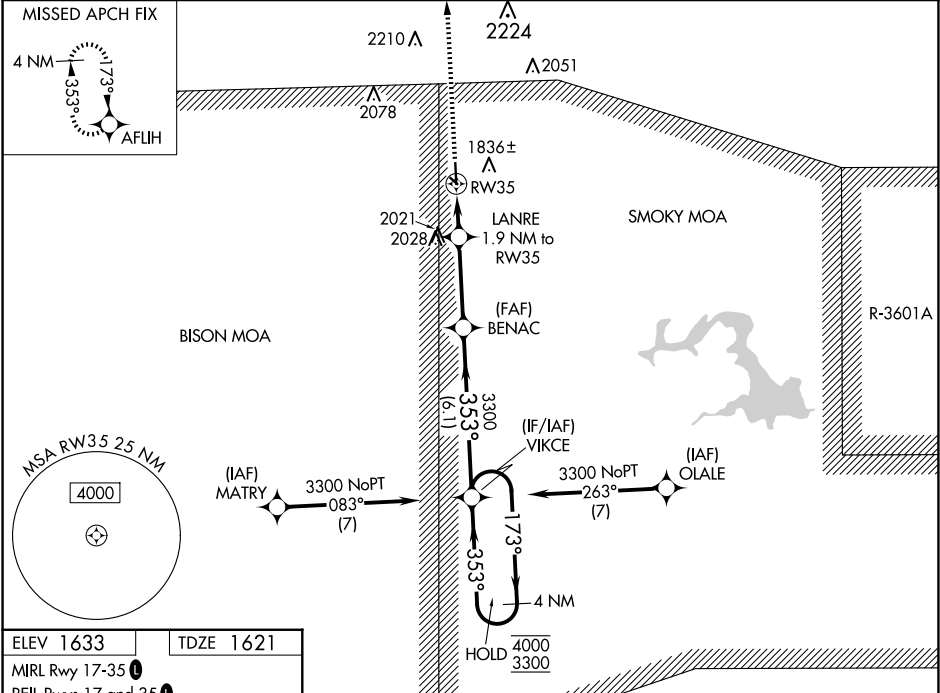
WAAS CH 72844 W35A	APP CRS 353°	Rwy Idg TDZE 1621 Apt Elev 1633
--	------------------------	---

RNAV (GPS) RWY 35

ELLSWORTH MUNI (9K7)

RNP APCH - GPS.	MISSED APPROACH: Climb to 3300 direct AFUHI and hold.
<div><div></div><div></div></div> <div>Circling NA to Rwy 13 and 31. Rwy 35 helicopter visibility reduction below ¾ NA. For uncompensated Baro-VNAV systems, LNAV/VNAV NA below -18°C or above 54°C.</div>	

AWOS-3PT 119.675	KANSAS CITY CENTER 134.9 363.2	UNICOM 122.7 (CTAF) 0
----------------------------	--	---------------------------------



3300	AFUHI	BENAC	VIKCE	4 NM Holding Pattern
3300	LANRE 1.9 NM to RW35	3300	353°	173°→ 4000
RW35	2260	3300	← 353°	3300
1.9 NM	3.3 NM	6.1 NM	GP 3.00°	TCH 40
CATEGORY	A	B	C	D
LPV DA	1871-1	250 (300-1)		NA
LNAV/VNAV DA	2094-1⅜	473 (500-1⅜)		NA
LNAV MDA	2160-1	539 (600-1)	2160-1½ 539 (600-1½)	NA
CIRCLING	2200-1	567 (600-1)	2540-2¾ 907 (1000-2¾)	NA

NC-2, 10 JUL 2025 to 07 AUG 2025

NC-2, 10 JUL 2025 to 07 AUG 2025