

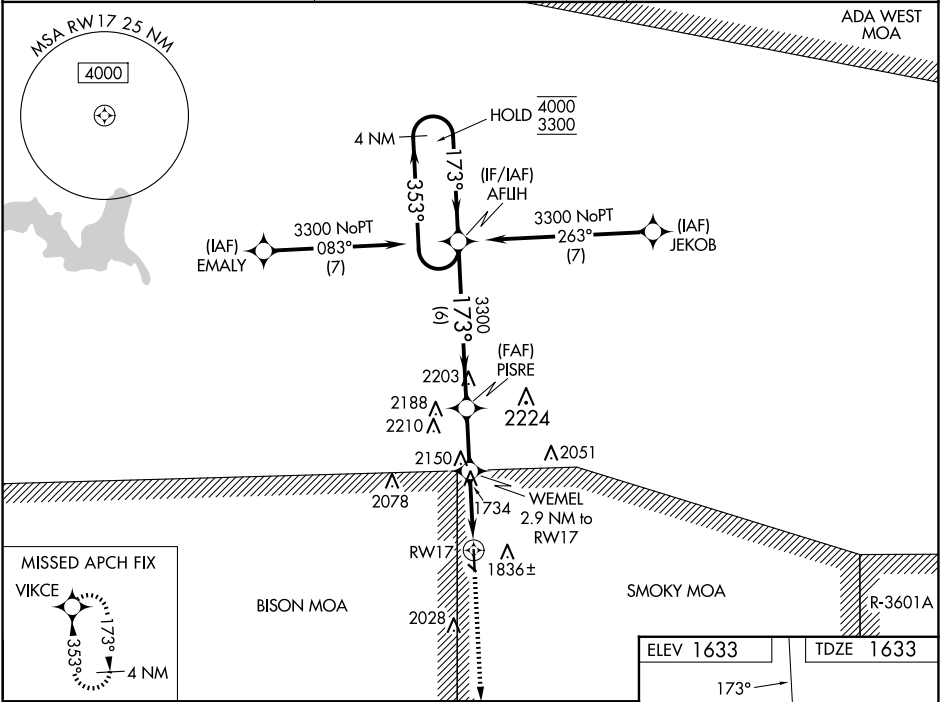
WAAS CH 69444 W17A	APP CRS 173°	Rwy Idg TDZE 1633 Apt Elev 1633
--	------------------------	---

RNAV (GPS) RWY 17

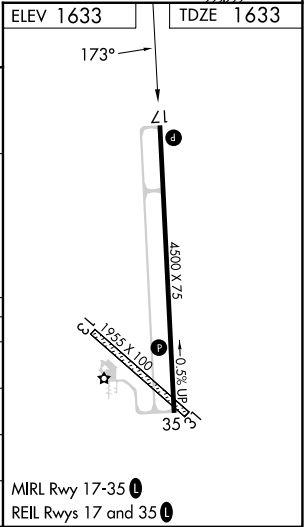
ELLSWORTH MUNI (9K7)

RNP APCH - GPS.	MISSED APPROACH: Climb to 3300 direct VIKCE and hold.
<div><div></div><div>Circling NA to Rwys 13 and 31. For uncompensated Baro-VNAV systems, LNAV/VNAV NA below -18°C or above 54°C.</div></div>	

AWOS-3PT 119.675	KANSAS CITY CENTER 134.9 363.2	UNICOM 122.7 (CTAF) 0
----------------------------	--	---------------------------------



4 NM Holding Pattern		AFJIH	PISRE	3300	WEMEL 2.9 NM to RW17	3300	VIKCE
4000 ← 353°		173° →		3300	1 NM to RW17	2580	
3300		3300		2580	RW17		
GP 3.00°		TCH 40		6 NM		2.3 NM	
				1.8 NM		1 NM	
CATEGORY	A	B	C	D			
LPV DA	1833-1 200 (200-1)			NA			
LNAV/VNAV DA	1883-1 250 (300-1)			NA			
LNAV MDA	2000-1 367 (400-1)			NA			
CIRCLING	2200-1 567 (600-1)		2540-2 3/4 907 (1000-2 3/4)		NA		



NC-2, 10 JUL 2025 to 07 AUG 2025

NC-2, 10 JUL 2025 to 07 AUG 2025