

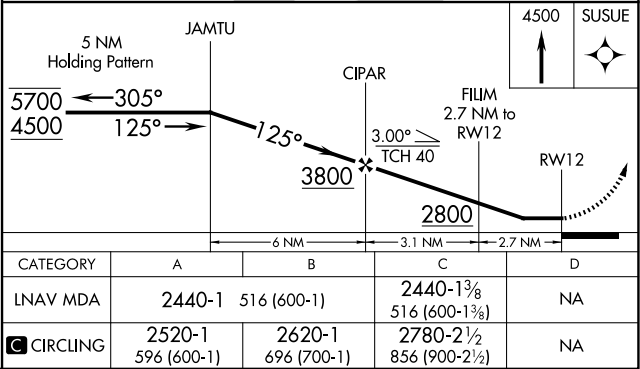
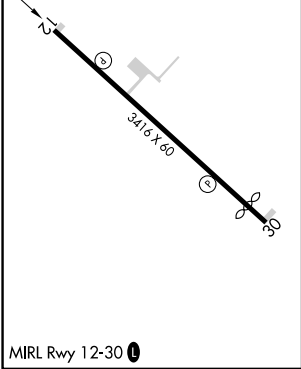
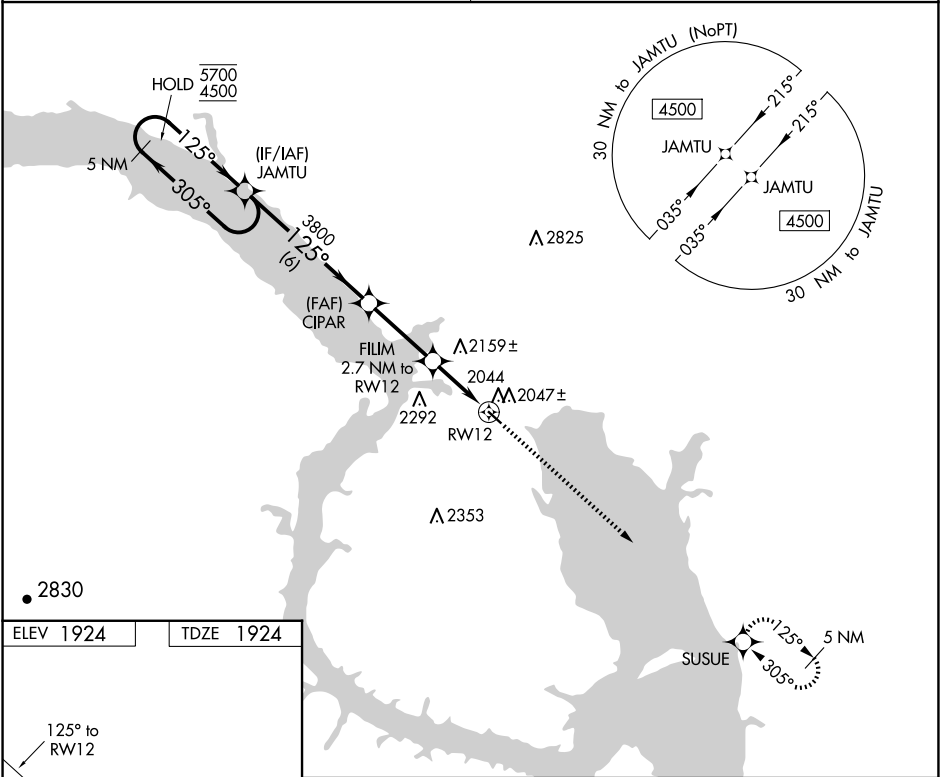
APP CRS	Rwy Idg	3416
125°	TDZE	1924
	Apt Elev	1924

RNAV (GPS) RWY 12

NEW TOWN MUNI (Ø5D)

RNP APCH.	MISSED APPROACH: Climb to 4500 direct SUSUE and hold.
<div><div>▼</div><div>▲ NA</div></div> Use Stanley altimeter setting, when not received, use Tioga altimeter setting and increase all MDAs 40 feet. Increase Cat C visibilities ¼ SM. Rwy 12 helicopter visibility reduction below ¾ SM NA.	

MINNEAPOLIS CENTER 127.6 279.6	CTAF 122.9 0
--	------------------------



NC-1, 10 JUL 2025 to 07 AUG 2025

NC-1, 10 JUL 2025 to 07 AUG 2025