

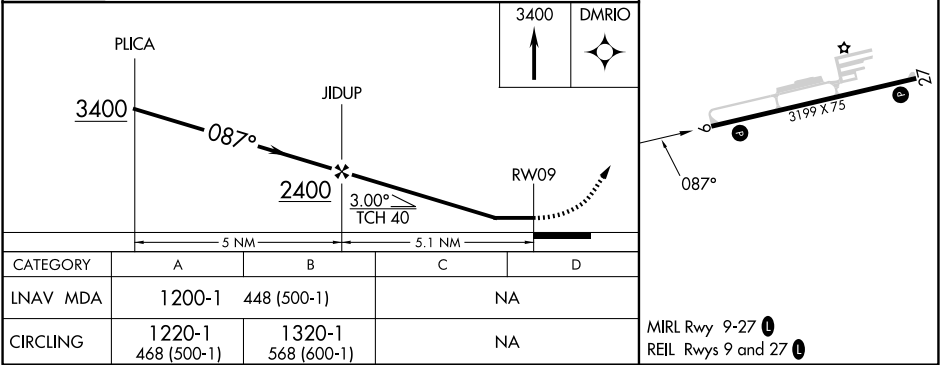
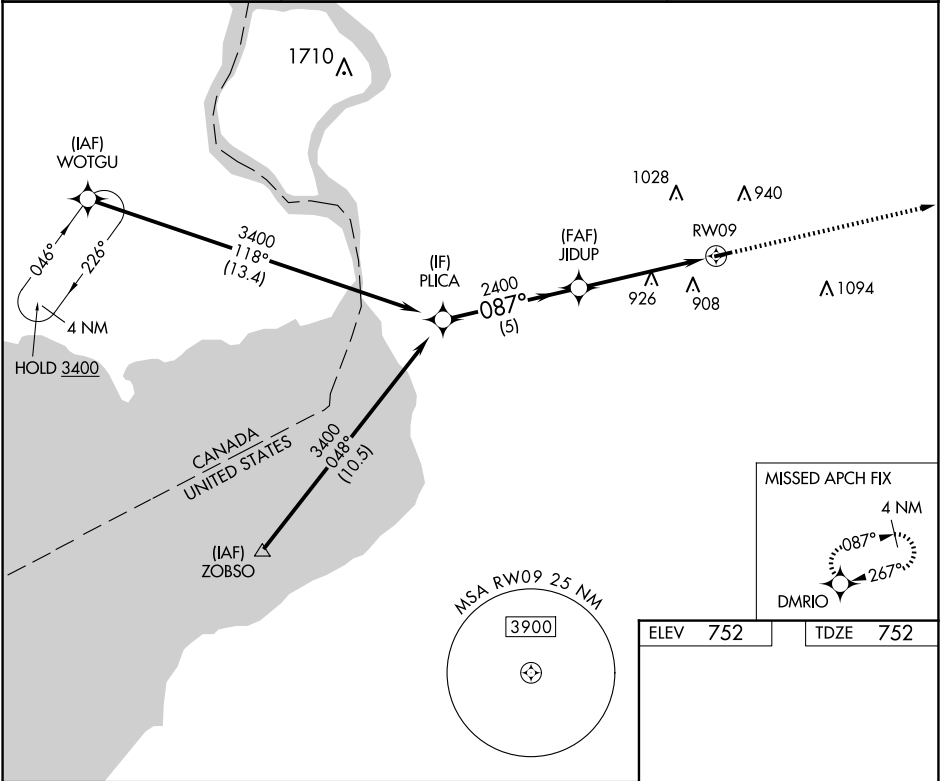
APP CRS	Rwy Idg	3199
087°	TDZE	752
	Apt Elev	752

RNAV (GPS) RWY 9

BUFFALO-LANCASTER RGNL (BQR)

RNP APCH - GPS.	When Circling to Rwy 27 at night, operational VGSI required, remain on or above VGSI glidepath until threshold. Rwy 9 helicopter visibility reduction below ¾ SM NA. Use Buffalo Niagara Intl altimeter setting.	MISSED APPROACH: Climb to 3400 direct DMRIO and hold, continue climb-in-hold to 3400.
▼ NA		

BUF ASOS 135.35	BUFFALO APP CON 126.15 263.125	UNICOM 123.05 (CTAF) 0
--------------------	-----------------------------------	---------------------------



NE-2, 10 JUL 2025 to 07 AUG 2025

NE-2, 10 JUL 2025 to 07 AUG 2025