

WAAS  
CH **77842**  
**W28A**

APP CRS  
**281°**

Rwy Idg  
TDZE **732**  
Apt Elev **732**

**RNAV (GPS) RWY 28**

BRECKINRIDGE COUNTY (I93)

RNP APCH.

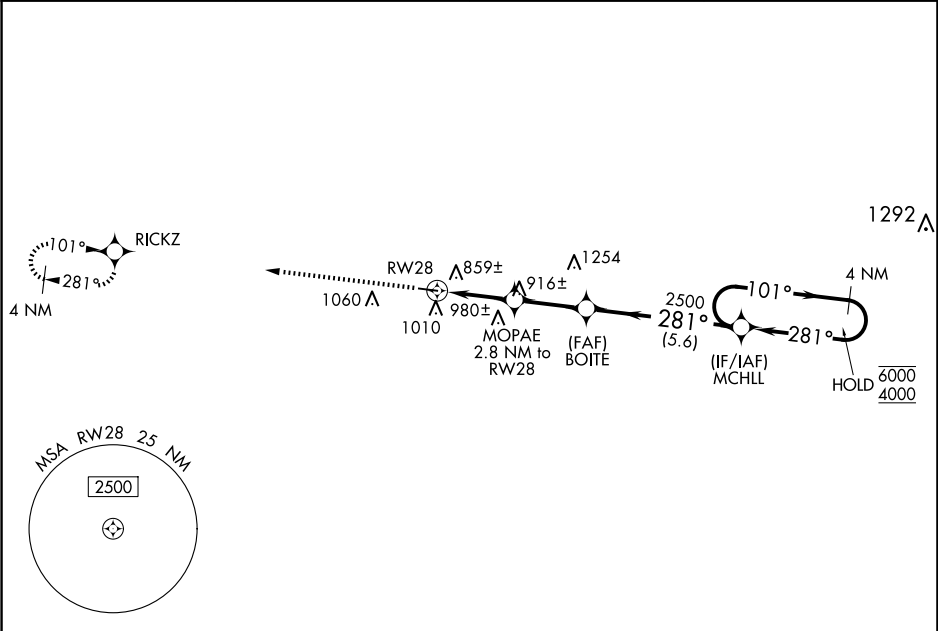
▼

NA

Baro-VNAV NA. Use Fort Knox altimeter setting, when not received, use Elizabethtown altimeter setting and increase LPV DA to 1047, LNAV/VNAV DA to 1185 and all MDA 20 feet.

MISSED APPROACH: Climb to 4000 direct RICKZ and hold, continue climb-in-hold to 4000.

AWOS-3PT <b>123.625</b>	KFTK ATIS ★ <b>109.6</b>	LOUISVILLE APP CON <b>132.075 327.0</b>	CTAF <b>122.9 0</b>
----------------------------	-----------------------------	--	------------------------



ELEV 732

TDZE 732

4000

RICKZ

VGSI and RNAV glidepath not coincident (VGSI Angle 3.00°/TCH 27°).

\*LNAV only.

MCHLL

4 NM Holding Pattern

101°

281°

6000

4000

GP 3.00°

TCH 50

2.8 NM

2.6 NM

5.6 NM

CATEGORY	A	B	C	D
LPV DA	1040-1		308 (400-1)	
LNAV/VNAV DA	1178-1 <sup>3</sup> / <sub>8</sub>		446 (500-1 <sup>3</sup> / <sub>8</sub> )	
LNAV MDA	1180-1	448 (500-1)	1180-1 <sup>3</sup> / <sub>8</sub>	448 (500-1 <sup>3</sup> / <sub>8</sub> )
<div><div>✈</div>CIRCLING</div>	1380-1 648 (700-1)	1480-1 748 (800-1)	1480-2 <sup>1</sup> / <sub>4</sub> 748 (800-2 <sup>1</sup> / <sub>4</sub> )	1480-2 <sup>1</sup> / <sub>2</sub> 748 (800-2 <sup>1</sup> / <sub>2</sub> )