

WAAS

CH 90442

W10A

APP CRS

101°

Rwy Idg

4000

TDZE

728

Apt Elev

732

RNAV (GPS) RWY 10

BRECKINRIDGE COUNTY (I93)

RNP APCH.

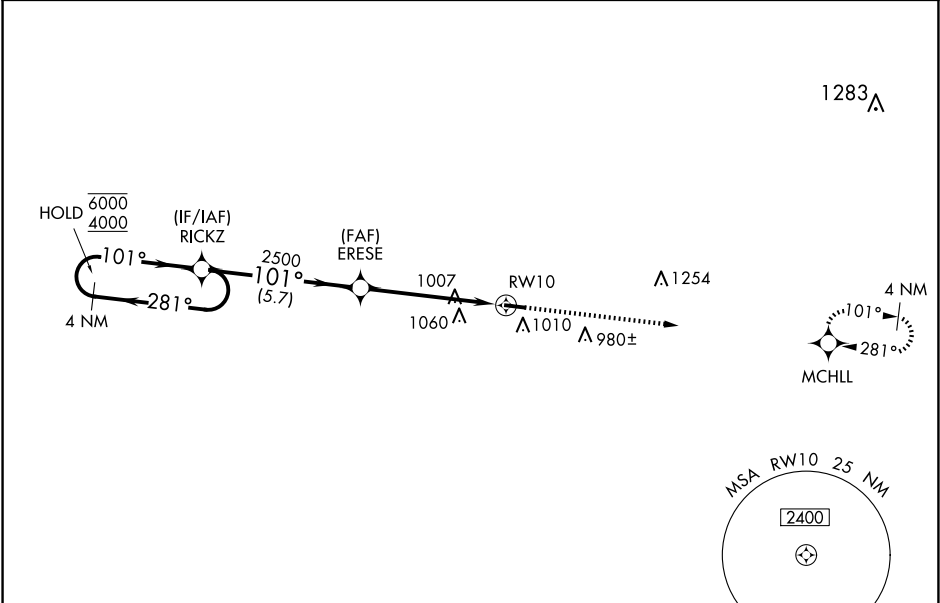
▼

NA

Rwy 10 helicopter visibility reduction below ¾ SM NA.
Baro-VNAV NA. Use Fort Knox altimeter setting, when not received,
use Elizabethtown altimeter setting and increase LPV DA to 1043,
LNAV/VNAV DA to 1191 and all MDA 20 feet.

MISSED APPROACH: Climb to 4000 direct MCHLL and hold,
continue climb-in-hold to 4000.

AWOS-3PT 123.625	KFTK ATIS ★ 109.6	LOUISVILLE APP CON 132.075 327.0	CTAF 122.9 0
---------------------	----------------------	-------------------------------------	-----------------



ELEV 732

TDZE 728

4000

MCHLL

VGSI and RNAV glidepath not coincident
(VGSI Angle 3.10/TCH 34).

4 NM Holding Pattern

RWY 10

ERESE

2500

RICKZ

101°

281°

101°

281°

6000

4000

GP 3.10°

TCH 54

CATEGORY	A	B	C	D
LPV DA	1036-1		308 (400-1)	
LNAV/VNAV DA	1184-1⅓		456 (500-1⅓)	
LNAV MDA	1380-1	652 (700-1)	1380-1⅞	652 (700-1⅞)
CIRCLING	1380-1 648 (700-1)	1480-1 748 (800-1)	1480-2¼ 748 (800-2¼)	1480-2½ 748 (800-2½)

MIRL Rwy 10-28 0

REIL Rwy 10 and 28 0