

Rwy Idg	<b>2756</b>
TDZE	<b>721</b>
Apt Elev	<b>721</b>

RNAV (GPS) RWY 29  
CYNTHIANA-HARRISON COUNTY (0T8)

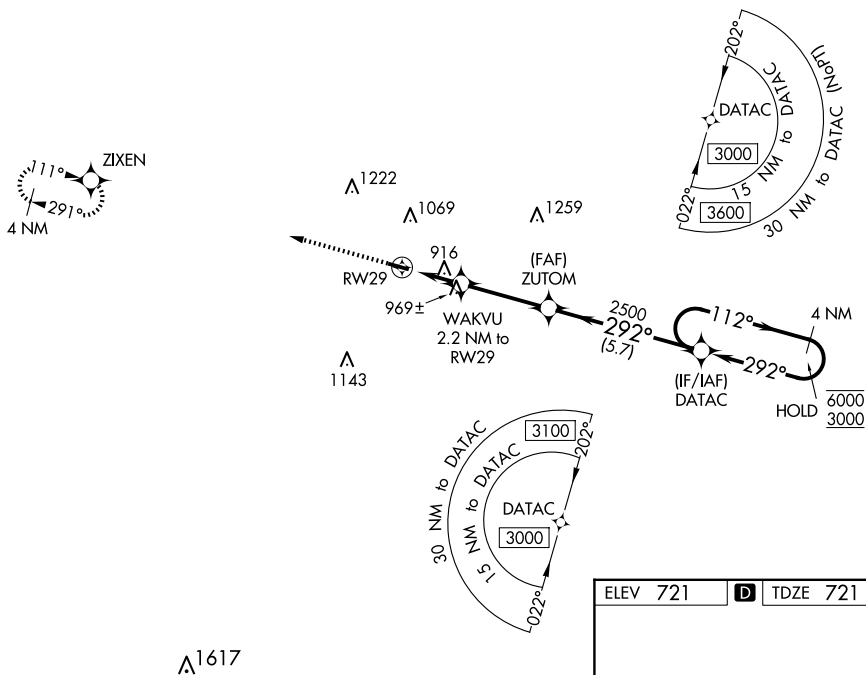
RNP APCH.

<b>T</b>	Procedure NA at night. Rwy 29 helicopter visibility reduction below 1 SM NA. Use Georgetown altimeter setting; when not received, use Lexington altimeter setting and increase all MDA 40 feet.
<b>A NA</b>	

**MISSED APPROACH:** Climb to 3000 direct ZIXEN and hold.

27K AWOS-3  
**119.975**

LEXINGTON APP CON  
**120.15 259.3** (040°-220°)  
**120.75 298.9** (221°-039°)

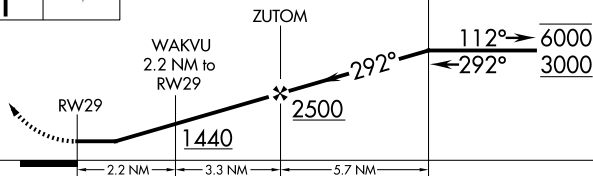
UNICOM  
122.8 (CTAF) **L**

3000

ZIXEN

### Visual Segment - Obstacles

DATA C	4 NM Holding Pattern
--------	----------------------



CATEGORY	A	B	C	D
LP MDA	1240-1	519 (600-1)	NA	
LNAV MDA	1280-1	559 (600-1)	NA	
<b>C</b> CIRCLING	1340-1 619 (700-1)	1560-1¼ 839 (900-1¼)	NA	

MIRL Rwy 11-29 **L**  
REIL Rwys 11 and 29 **L**