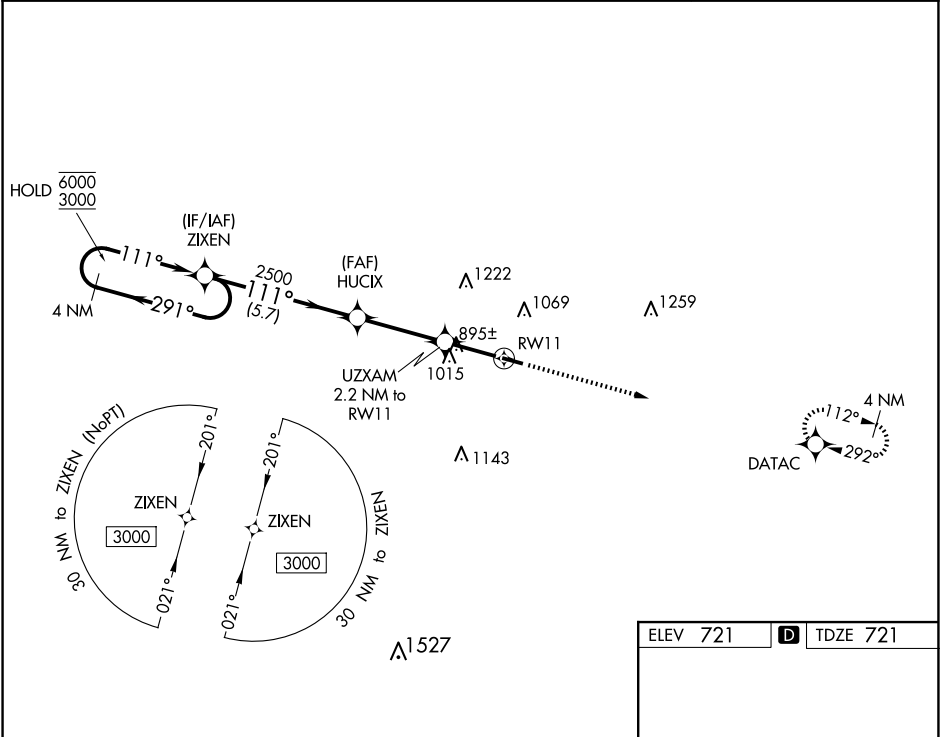


WAAS CH <b>62837</b> <b>W11A</b>	APP CRS <b>111°</b>	Rwy Idg TDZE <b>721</b> Apt Elev <b>721</b>	<b>3850</b>
--	------------------------	---	-------------

RNAV (GPS) RWY 11

CYNTHIANA-HARRISON COUNTY (ØI8)

RNP APCH.		MISSED APPROACH: Climb to 3000 direct DATAC and hold.
▼ ▲ NA Procedure NA at night. Rwy 11 helicopter visibility reduction below 1 SM NA. Use Georgetown altimeter setting; when not received, use Lexington altimeter setting and increase all MDA 40 feet.		
27K AWOS-3 <b>119.975</b>	LEXINGTON APP CON <b>120.15 259.3</b> (040°-220°) <b>120.75 298.9</b> (221°-039°)	UNICOM <b>122.8</b> (CTAF) <b>Ø</b>



4 NM Holding Pattern		ZIXEN		Visual Segment - Obstacles.		3000	DATAC	111°	
<div>6000 ← 291° 3000 ← 111° →</div>		<div>111°</div>		<div>HUCIX</div>		<div>UZXAM 2.2 NM to RW11</div>		<div>3850 X 75</div>	
		<div>2500</div>		<div>1460</div>		<div>RW11</div>		<div>721</div>	
		<div>5.7 NM</div>		<div>3.3 NM</div>		<div>2.2 NM</div>			
CATEGORY		A		B		C		D	
LP MDA		1220-1		499 (500-1)		NA			
LNAV MDA		1300-1		579 (600-1)		NA			
CIRCLING		1340-1 619 (700-1)		1560-1¼ 839 (900-1¼)		NA			
MIRL Rwy 11-29 REIL Rws 11 and 29									

SE-1, 10 JUL 2025 to 07 AUG 2025

SE-1, 10 JUL 2025 to 07 AUG 2025

MIRL Rwy 11-29 Ø  
REIL Rwy 11 and 29 Ø