

APP CRS
001°

Rwy Idg
TDZE
12

3000
Apt Elev
12

RNAV (GPS) RWY 3

FIRST FLIGHT (F F A)

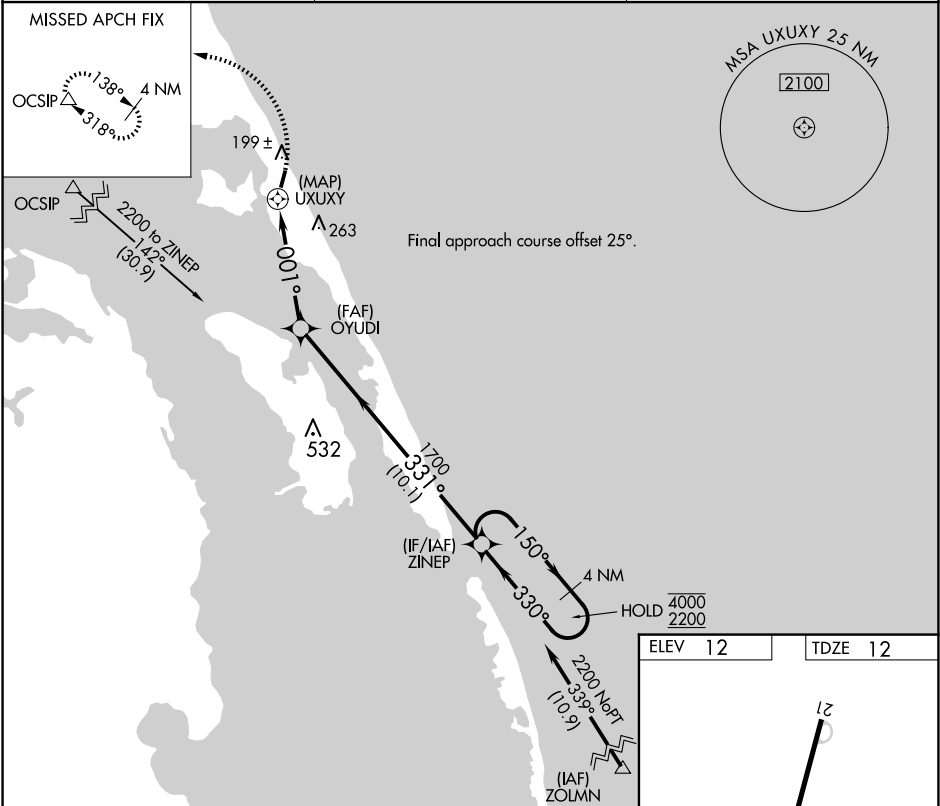
RNP APCH - GPS.

▼ Procedure NA at night.

▲ Rwy 3 helicopter visibility reduction below 1 SM NA.

MISSED APPROACH: Climbing left turn to 3000 direct OCSIP and hold.

AWOS-3 118.075	CHERRY POINT APP CON 124.725 350.35	CTAF 122.9
--------------------------	---	----------------------



3000 OCSIP

Visual segment - obstacles.

ZINEP

4 NM Holding Pattern

UXUXY

001° 1700

OYUDI

331°

150° 4000

330° 2200

0.5 4.7 NM 10.1 NM

CATEGORY	A	B	C	D
LNAV MDA	480-1	468 (500-1)	NA	
CIRCLING	520-1 508 (600-1)	540-1 528 (600-1)	NA	

3000 X 40

001°