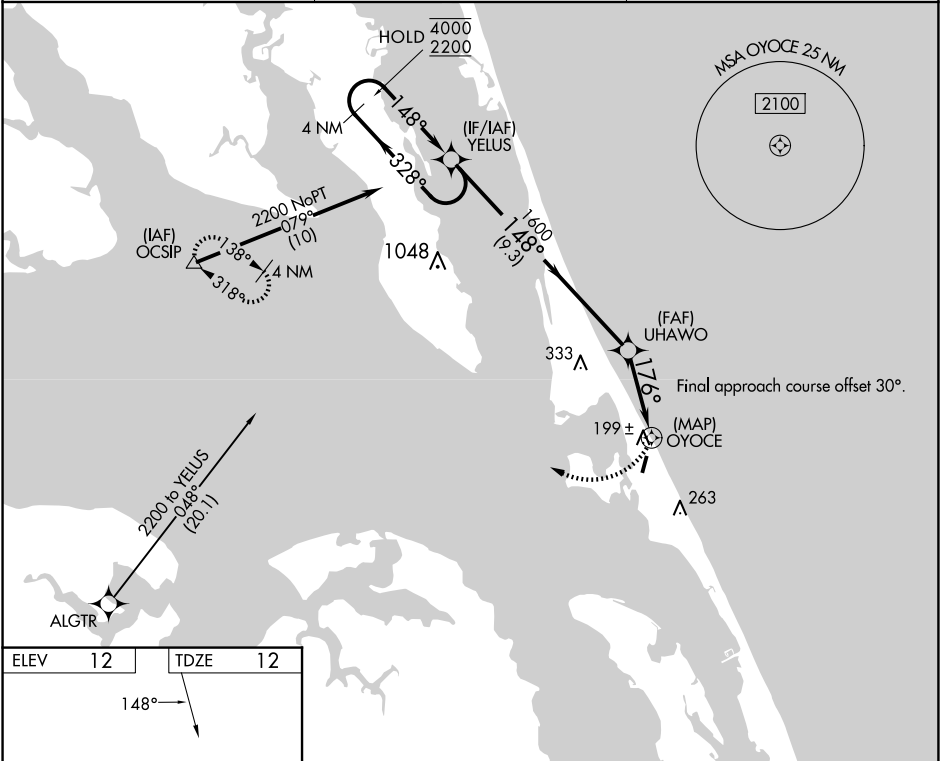


WAAS CH 50240 W21A	APP CRS 176°	Rwy Idg TDZE 12 Apt Elev 12	3000
--	------------------------	---	-------------

RNAV (GPS) RWY 21

FIRST FLIGHT(F F A)

RNP APCH - GPS.		MISSED APPROACH: Climbing right turn to 3000 direct OCSIP and hold.
Rwy 21 helicopter visibility reduction below 1 SM NA. Procedure NA at night.		
AWOS-3 118.075	CHERRY POINT APP CON 124.725 350.35	CTAF 122.9



ELEV 12 TDZE 12		3000 OCSIP	
148°		3000 OCSIP	
21		3000 OCSIP	
3000 x 40		3000 OCSIP	
3		3000 OCSIP	
4 NM Holding Pattern YELUS		3000 OCSIP	
4000 328°		3000 OCSIP	
2200 148°		3000 OCSIP	
UHAWO 3.75° TCH 40		3000 OCSIP	
1600 176°		3000 OCSIP	
9.3 NM 3.2 NM 0.7 NM		3000 OCSIP	
CATEGORY	A	B	C D
LP MDA	460-1	448 (500-1)	NA
LNAV MDA	500-1	488 (500-1)	NA
CIRCLING	520-1 508 (600-1)	540-1 528 (600-1)	NA