

WAAS CH 65832 W18A	APP CRS 182°	Rwy Idg TDZE 239 Apt Elev 239
--	------------------------	---

RNAV (GPS) RWY 18

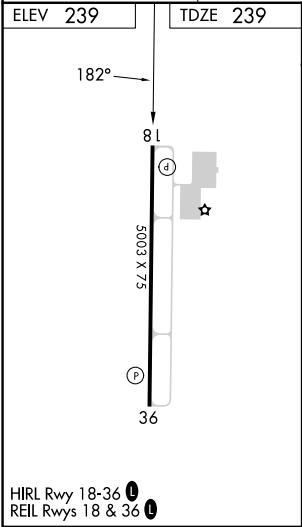
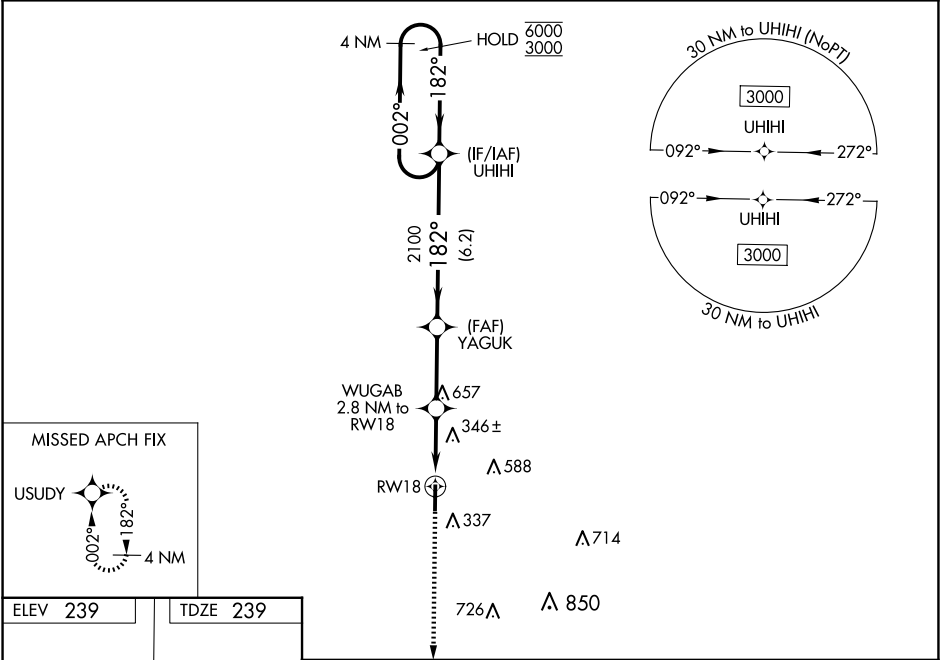
DELTA RGNL (DRP)

RNP APCH - GPS.

Baro-VNAV and VDP NA when using West Memphis altimeter setting. For uncompensated Baro-VNAV systems, LNAV/VNAV NA below -15°C or above 54°C. When local altimeter setting not received, use West Memphis altimeter setting; increase LPV DA to 507 feet and all visibilities $\frac{1}{8}$ SM; increase LNAV/VNAV DA to 668 feet and all visibilities $\frac{1}{4}$ SM; increase all MDAs 80 feet.

MISSED APPROACH: Climb to 3000 direct USUDY and hold, continue climb-in-hold to 3000.

AWOS-3P 120.0	MEMPHIS CENTER 135.3 335.8	UNICOM 123.0 (CTAF) 0
-------------------------	--------------------------------------	---------------------------------



3000 USUDY		UHIHI 4 NM Holding Pattern	
RWY 18		YAGUK 2100 182° 6000 3000	
WUGAB 2.8 NM to RWY 18		1160 2100	
1 NM		GP 3.00° TCH 44	
1.8 NM			
2.9 NM			
6.2 NM			
CATEGORY	A	B	C D
LPV DA	439- $\frac{3}{4}$	200 (200- $\frac{3}{4}$)	NA
LNAV/VNAV DA	600-1	361 (400-1)	NA
LNAV MDA	600-1	361 (400-1)	NA
CIRCLING	760-1	521 (600-1)	NA