

INVERNESS, FLORIDA

AL-10673 (FAA)

20310

APP CRS
011°

Rwy Idg	5000
TDZE	65
Apt Elev	65

RNAV (GPS) RWY 1
INVERNESS (INF)

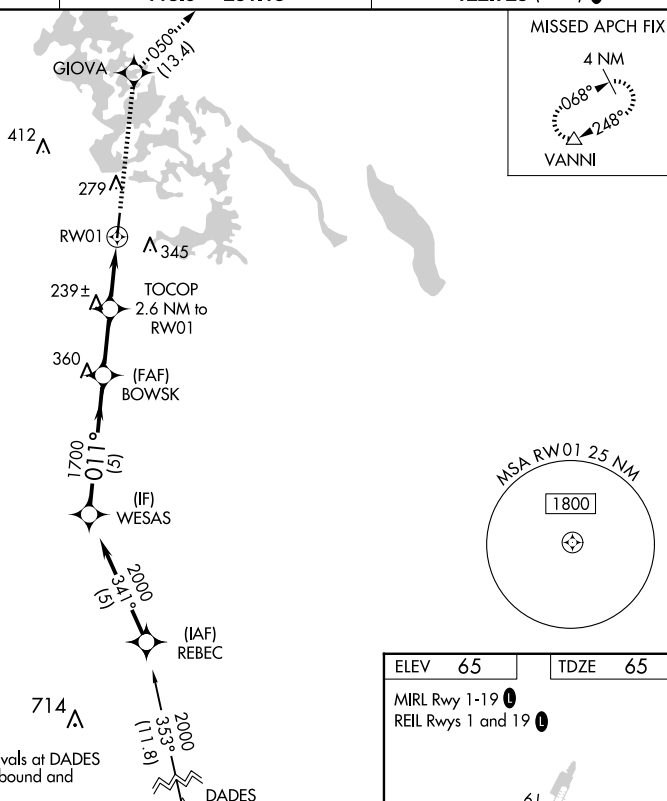
T When local altimeter setting not received, use Ocala altimeter setting and increase all
A MDA 60 feet; and increase LNAV Cat C visibility $\frac{1}{8}$ mile and Circling Cat C visibility $\frac{1}{4}$ mile.
DME/DME RNP-0.3 NA. Visibility reduction by helicopters NA. Procedure NA at night.

MISSED APPROACH: Climb to 2000 direct GIOVA and on track 050° to VANNI and hold.

AWOS-3
119.975

JACKSONVILLE APP CON
118.6 251.15


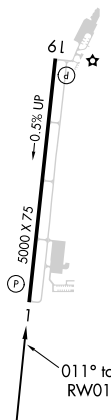
UNICOM
122.725 (CTAF) **L**



Procedure NA for arrivals at DADES
on V7-521 southeast bound and
V581 southbound.

ELEV	65		TDZE	65
------	----	--	------	----

MIRL Rwy 1-19 **L**
REIL Rwy 1 and 19 **L**



WESAS

2000

0.11°

BOWSK

1700

3.00°

TCH 47

2.6 NM to RW01

940

5 NM

2.4 NM

2.6 NM

RW01

VGS and descent angles not coincident
(VGS Angle 3.50/TCH 47).

2000	GIOVA	tr 050°	VANNI
↑	✦		△

CATEGORY	A	B	C	D
LNAV MDA	500-1	435 (500-1)	500-1¼ 435 (500-1¼)	NA
CIRCLING	660-1	595 (600-1)	660-1½ 595 (600-1½)	NA

INVERNESS, FLORIDA

Orig-A 21AUG14

28°48'N-82°19'W

INVERNESS (INF)

RNAV (GPS) RWY 1