

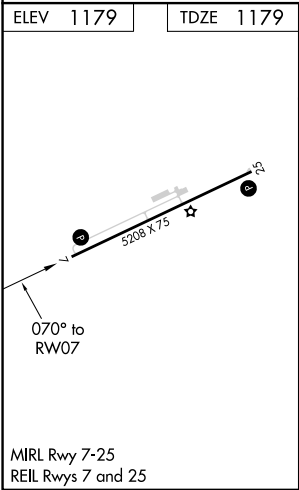
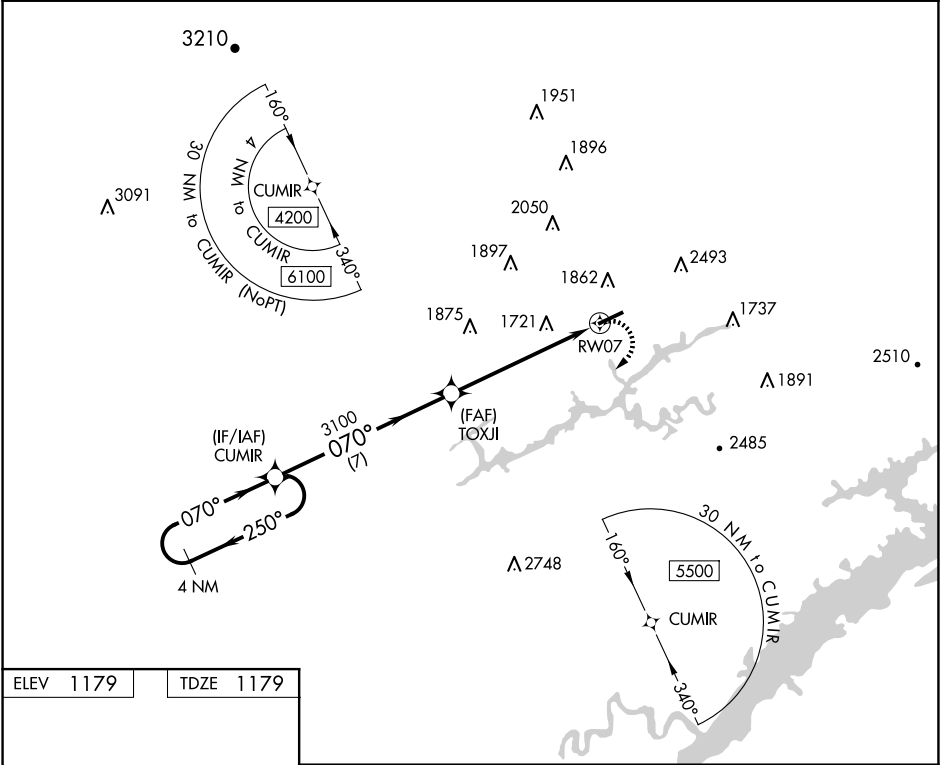
WAAS CH 69335 W07A	APP CRS 070°	Rwy Idg TDZE 1179 Apt Elev 1179
--	------------------------	---

RNAV (GPS) RWY 7

NEW TAZEWELL MUNI (3A2)

<div><div><div><div></div><div>NA</div></div></div><div>DME/DME RNP-0.3 NA. Rwy 7, 25 Helicopter visibility reduction below 1 SM NA. Procedure NA at night. Obtain local altimeter setting on CTAF; when not received, use Middlesboro altimeter setting and increase all MDAs 60 feet.</div></div>	MISSED APPROACH: Climbing right turn to 4200 direct CUMIR and hold.
---	---

ATLANTA CENTER 133.6 254.3	CTAF 122.9 0
--------------------------------------	------------------------



4 NM Holding Pattern		CUMIR	VGSI and descent angles not coincident (VGSI Angle 3.50/TCH 35).		4200	CUMIR
4200		250°	070°	070°	3100	
		7 NM	5.9 NM			
CATEGORY	A	B	C	D		
LP MDA	2240-1¼ 1061 (1100-1¼)	2240-1½ 1061 (1100-1½)	NA			
LNAV MDA	2260-1¼ 1081 (1100-1¼)	2260-1½ 1081 (1100-1½)	NA			
CIRCLING	2260-1¼ 1081 (1100-1¼)	2260-1½ 1081 (1100-1½)	NA			