

APP CRS	Rwy Idg	3000
268°	TDZE	559
	Apt Elev	559

RNAV (GPS) RWY 27
DANVILLE (8N8)

RNP APCH - GPS.



Use Williamsport altimeter setting; when not received, procedure NA.



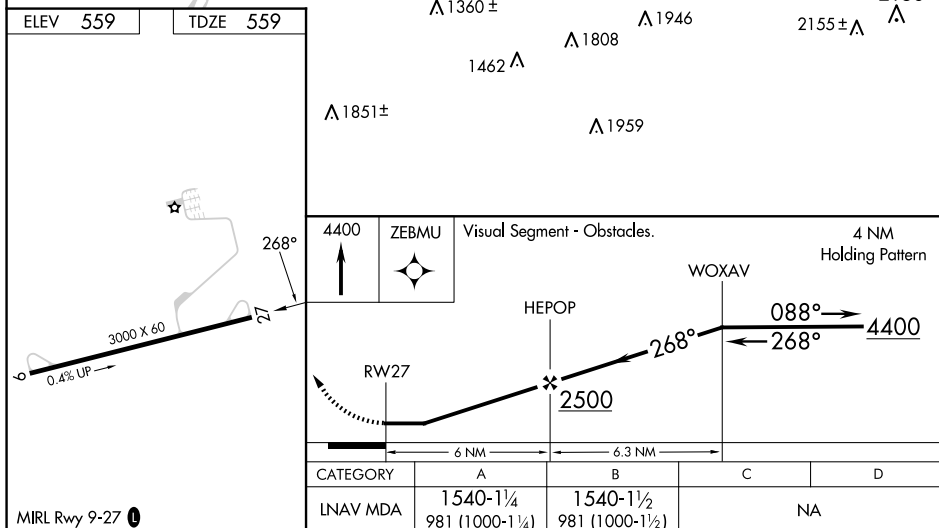
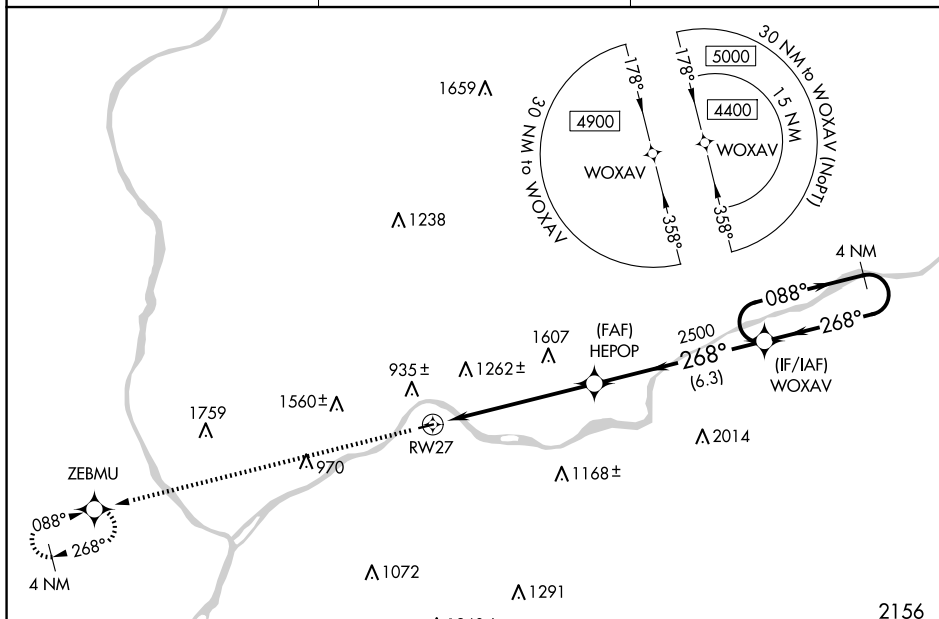
Procedure NA at night.

Rwy 27 helicopter visibility reduction below 1 SM NA.

MISSED APPROACH: Climb to 4400
direct ZEBMU and hold, continue
climb-in-hold 4400.

IPT ASOS
125,225

WILKES-BARRE APP CON
126.3 256.7

UNICOM
122.8 (CTAF) **L**

DANVILLE, PENNSYLVANIA

Orig-D 18APR24

40°57'N-76°39'W

DANVILLE (8N8)

RNAV (GPS) RWY 27